

Product datasheet for **TA332188**

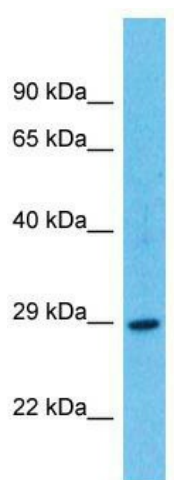
TARM1 Rabbit Polyclonal Antibody

Product data:

Product Type:	Primary Antibodies
Applications:	WB
Recommended Dilution:	WB
Reactivity:	Human
Host:	Rabbit
Isotype:	IgG
Clonality:	Polyclonal
Immunogen:	The immunogen for Anti-TARM1 Antibody is: synthetic peptide directed towards the C-terminal region of Human TARM1. Synthetic peptide located within the following region: PGTSSNYSLGNFVRLGLAAVIVIMGAFLVEAWYSRNVSPGESEAFKPE
Formulation:	Liquid. Purified antibody supplied in 1x PBS buffer with 0.09% (w/v) sodium azide and 2% sucrose.
Conjugation:	Unconjugated
Storage:	Store at -20°C as received.
Stability:	Stable for 12 months from date of receipt.
Predicted Protein Size:	27 kDa
Gene Name:	T cell-interacting, activating receptor on myeloid cells 1
Database Link:	NP_001129158 Entrez Gene 441864 Human B6A8C7
Background:	The function of this protein remains unknown.
Synonyms:	OLT-2
Note:	Immunogen sequence homology: Human: 100%



[View online »](#)

Product images:

Host: Rabbit; Target Name: TARM1; Sample
Tissue: MCF7 Whole Cell lysates; Antibody
Dilution: 1.0ug/ml