

Product datasheet for **TA332187**

PPIAL4C Rabbit Polyclonal Antibody

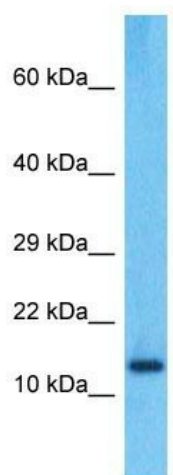
Product data:

Product Type:	Primary Antibodies
Applications:	WB
Recommended Dilution:	WB
Reactivity:	Human
Host:	Rabbit
Isotype:	IgG
Clonality:	Polyclonal
Immunogen:	The immunogen for Anti-PPIAL4C Antibody is: synthetic peptide directed towards the C-terminal region of Human PPIAL4C. Synthetic peptide located within the following region: NGSQFFICAAKTEWLDGKHVAFGKVKERVNIVEAMEHFGYRNSKTSKKIT
Formulation:	Liquid. Purified antibody supplied in 1x PBS buffer with 0.09% (w/v) sodium azide and 2% sucrose. <i>Note that this product is shipped as lyophilized powder to China customers.</i>
Conjugation:	Unconjugated
Storage:	Store at -20°C as received.
Stability:	Stable for 12 months from date of receipt.
Predicted Protein Size:	18 kDa
Gene Name:	peptidylprolyl isomerase A like 4C
Database Link:	NP_001129261 Entrez Gene 653598 Human A0A0B4J2A2
Background:	PPIases accelerate the folding of proteins. It catalyzes the cis-trans isomerization of proline imidic peptide bonds in oligopeptides.
Synonyms:	COAS-2
Note:	Immunogen sequence homology: Human: 100%; Rat: 86%; Horse: 85%; Dog: 79%; Pig: 79%; Goat: 79%; Mouse: 79%; Sheep: 79%; Bovine: 79%; Guinea pig: 79%



[View online »](#)

Product images:



Host: Rabbit
Target Name: PPIAL4C
Sample Tissue: A549 Cell Lysate
Antibody Dilution: 1.0 μ g/ml

Host: Rabbit; Target Name: PPIAL4C; Sample Tissue: A549 Whole Cell lysates; Antibody Dilution: 1.0ug/ml