

Product datasheet for **TA332186**

R3HCC1 Rabbit Polyclonal Antibody

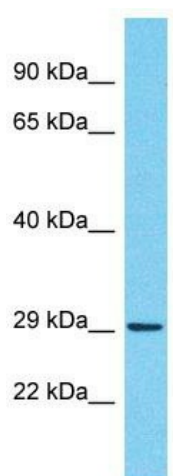
Product data:

Product Type:	Primary Antibodies
Applications:	WB
Recommended Dilution:	WB
Reactivity:	Human
Host:	Rabbit
Isotype:	IgG
Clonality:	Polyclonal
Immunogen:	The immunogen for Anti-R3HCC1 Antibody is: synthetic peptide directed towards the C-terminal region of Human R3HCC1. Synthetic peptide located within the following region: VDDTHALGIFPCLASAAEALTREFSVLKIRPLTQGKQSKLKALQRPKLL
Formulation:	Liquid. Purified antibody supplied in 1x PBS buffer with 0.09% (w/v) sodium azide and 2% sucrose.
Conjugation:	Unconjugated
Storage:	Store at -20°C as received.
Stability:	Stable for 12 months from date of receipt.
Predicted Protein Size:	28 kDa
Gene Name:	R3H domain and coiled-coil containing 1
Database Link:	NP_001129580 Entrez Gene 203069 Human Q9Y3T6
Background:	The function of this protein remains unknown.
Synonyms:	DKFZp564N123
Note:	Immunogen sequence homology: Dog: 100%; Rat: 100%; Horse: 100%; Human: 100%; Mouse: 100%; Bovine: 86%; Pig: 83%; Guinea pig: 83%; Rabbit: 79%



[View online »](#)

Product images:



Host: Rabbit
Target Name: R3HCC1
Sample Tissue: MCF7 Cell Lysate
Antibody Dilution: 1.0 μ g/ml

Host: Rabbit; Target Name: R3HCC1; Sample
Tissue: MCF7 Whole Cell lysates; Antibody
Dilution: 1.0ug/ml