

## Product datasheet for **TA332181**

### **PATE4 Rabbit Polyclonal Antibody**

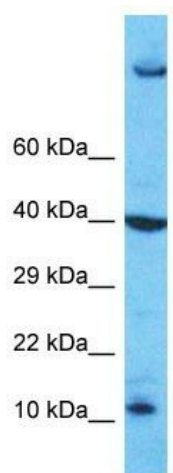
#### **Product data:**

Product Type:	Primary Antibodies
Applications:	WB
Recommended Dilution:	WB
Reactivity:	Human
Host:	Rabbit
Isotype:	IgG
Clonality:	Polyclonal
Immunogen:	The immunogen for Anti-PATE4 Antibody is: synthetic peptide directed towards the middle region of Human PATE4. Synthetic peptide located within the following region: KENELCSTTAYFRGDKHMYSTHMCKYKREEESSKRGLLRVTLCCDRNFC
Formulation:	Liquid. Purified antibody supplied in 1x PBS buffer with 0.09% (w/v) sodium azide and 2% sucrose. <i>Note that this product is shipped as lyophilized powder to China customers.</i>
Conjugation:	Unconjugated
Storage:	Store at -20°C as received.
Stability:	Stable for 12 months from date of receipt.
Predicted Protein Size:	10 kDa
Gene Name:	prostate and testis expressed 4
Database Link:	<a href="#">NP_001138346</a> <a href="#">Entrez Gene 399968 Human</a> <a href="#">POC8F1</a>
Background:	PATE4 may modulate the function of nicotinic acetylcholine receptors and may enhance sperm motility.
Synonyms:	PATE-B
Note:	Immunogen sequence homology: Human: 100%



[View online »](#)

## Product images:



Host: Rabbit

Target Name: PATE4

Sample Tissue: Jurkat Cell Lysate

Antibody Dilution: 1.0 $\mu$ g/ml

Host: Rabbit; Target Name: PATE4; Sample  
Tissue: Jurkat Whole Cell lysates; Antibody  
Dilution: 1.0ug/ml