

Product datasheet for **TA332180**

RIIAD1 Rabbit Polyclonal Antibody

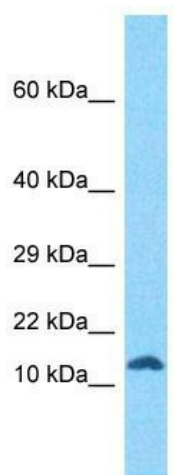
Product data:

Product Type:	Primary Antibodies
Applications:	WB
Recommended Dilution:	WB
Reactivity:	Human
Host:	Rabbit
Isotype:	IgG
Clonality:	Polyclonal
Immunogen:	The immunogen for Anti-RIIAD1 Antibody is: synthetic peptide directed towards the N-terminal region of Human RIIAD1. Synthetic peptide located within the following region: LLQRDPGALSAAQLEQLRKFKIQTRIANEKYLRTHEVEWLISGFFREI
Formulation:	Liquid. Purified antibody supplied in 1x PBS buffer with 0.09% (w/v) sodium azide and 2% sucrose. <i>Note that this product is shipped as lyophilized powder to China customers.</i>
Conjugation:	Unconjugated
Storage:	Store at -20°C as received.
Stability:	Stable for 12 months from date of receipt.
Predicted Protein Size:	10 kDa
Gene Name:	regulatory subunit of type II PKA R-subunit (RIIa) domain containing 1
Database Link:	NP_001138428 Entrez Gene 284485 Human A6NNX1
Background:	The function of this protein remains unknown.
Synonyms:	C1orf230; NCRNA00166
Note:	Immunogen sequence homology: Human: 100%



[View online »](#)

Product images:



Host: Rabbit
Target Name: RIIAD1
Sample Tissue: Jurkat Cell Lysate
Antibody Dilution: 1.0µg/ml

Host: Rabbit; Target Name: RIIAD1; Sample
Tissue: Jurkat Whole Cell lysates; Antibody
Dilution: 1.0ug/ml