

## Product datasheet for **TA332179**

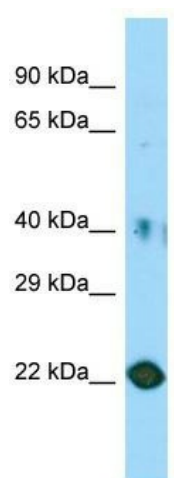
### PLET1 Rabbit Polyclonal Antibody

#### Product data:

Product Type:	Primary Antibodies
Applications:	WB
Recommended Dilution:	WB
Reactivity:	Human
Host:	Rabbit
Isotype:	IgG
Clonality:	Polyclonal
Immunogen:	The immunogen for Anti-C11orf34 Antibody is: synthetic peptide directed towards the middle region of Human C11orf34. Synthetic peptide located within the following region: NSDSAGLWQRADKNCYSNSTYYVKDQYMTVLEAQWQAPEPENITEVEIQ
Formulation:	Liquid. Purified antibody supplied in 1x PBS buffer with 0.09% (w/v) sodium azide and 2% sucrose.
Conjugation:	Unconjugated
Storage:	Store at -20°C as received.
Stability:	Stable for 12 months from date of receipt.
Predicted Protein Size:	22 kDa
Gene Name:	placenta expressed transcript 1
Database Link:	<a href="#">NP_001138496</a> <a href="#">Entrez Gene 349633 Human</a> <a href="#">Q6UQ28</a>
Background:	C11orf34 may participate in the wound response during the healing process, and promote wound repair.
Synonyms:	C11orf34
Note:	Immunogen sequence homology: Human: 100%



[View online »](#)

**Product images:**

Host: Rabbit; Target Name: C11orf34; Sample  
Tissue: HT1080 Whole Cell lysates; Antibody  
Dilution: 1.0ug/ml