

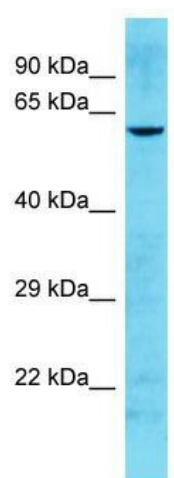
Product datasheet for TA332178

HHLA1 Rabbit Polyclonal Antibody

Product data:

| | |
|-------------------------|--|
| Product Type: | Primary Antibodies |
| Applications: | WB |
| Recommended Dilution: | WB |
| Reactivity: | Human |
| Host: | Rabbit |
| Isotype: | IgG |
| Clonality: | Polyclonal |
| Immunogen: | The immunogen for Anti-HHLA1 Antibody is: synthetic peptide directed towards the N-terminal region of Human HHLA1. Synthetic peptide located within the following region: VSGIKGEAKKEKGMTFLPTTVSGLREEERKEKGVAFLATTELPARSIDLS |
| Formulation: | Liquid. Purified antibody supplied in 1x PBS buffer with 0.09% (w/v) sodium azide and 2% sucrose. |
| Conjugation: | Unconjugated |
| Storage: | Store at -20°C as received. |
| Stability: | Stable for 12 months from date of receipt. |
| Predicted Protein Size: | 58 kDa |
| Gene Name: | HERV-H LTR-associating 1 |
| Database Link: | NP_001138567 Entrez Gene 10086 Human C9JL84 |
| Background: | The function of this protein remains unknown. |
| Synonyms: | PLA2L |
| Note: | Immunogen sequence homology: Human: 100%; Rat: 83%; Dog: 79% |
| Protein Families: | Druggable Genome |


[View online »](#)

Product images:


Host: Rabbit; Target Name: HHLA1; Sample
Tissue: HeLa Whole cell lysates; Antibody Dilution:
1.0ug/ml