

Product datasheet for **TA332176**

OTUD1 Rabbit Polyclonal Antibody

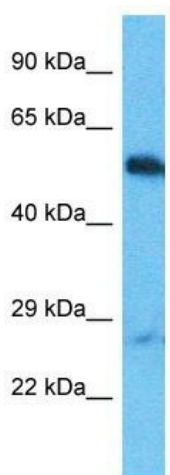
Product data:

Product Type:	Primary Antibodies
Applications:	WB
Recommended Dilution:	WB
Reactivity:	Human
Host:	Rabbit
Isotype:	IgG
Clonality:	Polyclonal
Immunogen:	The immunogen for Anti-OTUD1 Antibody is: synthetic peptide directed towards the C-terminal region of Human OTUD1. Synthetic peptide located within the following region: NGHYDAVFDHSYPNPEYDNWCKQTQVQRKRDEELAKSMAISLSKMYIEQN
Formulation:	Liquid. Purified antibody supplied in 1x PBS buffer with 0.09% (w/v) sodium azide and 2% sucrose. <i>Note that this product is shipped as lyophilized powder to China customers.</i>
Conjugation:	Unconjugated
Storage:	Store at -20°C as received.
Stability:	Stable for 12 months from date of receipt.
Predicted Protein Size:	50 kDa
Gene Name:	OTU deubiquitinase 1
Database Link:	NP_001138845 Entrez Gene 220213 Human Q5VV17
Background:	Deubiquitinating enzymes are proteases that specifically cleave ubiquitin linkages, negating the action of ubiquitin ligases. DUBA7 belongs to a DUB subfamily characterized by an ovarian tumor (OTU) domain.
Synonyms:	DUBA7; OTDC1
Note:	Immunogen sequence homology: Dog: 100%; Rat: 100%; Horse: 100%; Human: 100%; Bovine: 100%; Mouse: 86%



[View online »](#)

Product images:



Host: Rabbit
Target Name: OTUD1
Sample Tissue: HepG2 Cell Lysate
Antibody Dilution: 1.0 μ g/ml

Host: Rabbit; Target Name: OTUD1; Sample Tissue: HepG2 Whole Cell lysates; Antibody Dilution: 1.0 μ g/ml