

Product datasheet for **TA332174**

AFAP1L1 Rabbit Polyclonal Antibody

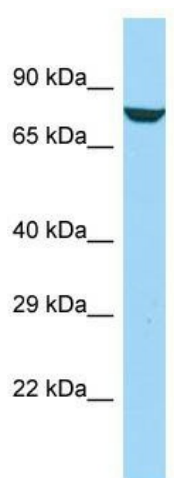
Product data:

Product Type:	Primary Antibodies
Applications:	WB
Recommended Dilution:	WB
Reactivity:	Human
Host:	Rabbit
Isotype:	IgG
Clonality:	Polyclonal
Immunogen:	The immunogen for Anti-AFAP1L1 Antibody is: synthetic peptide directed towards the C-terminal region of Human AFAP1L1. Synthetic peptide located within the following region: QVKRHASSCSEKSHRVDPQVKVKRHASSANQYKYGKNRAEEDARRYLVEK
Formulation:	Liquid. Purified antibody supplied in 1x PBS buffer with 0.09% (w/v) sodium azide and 2% sucrose. <i>Note that this product is shipped as lyophilized powder to China customers.</i>
Conjugation:	Unconjugated
Storage:	Store at -20°C as received.
Stability:	Stable for 12 months from date of receipt.
Predicted Protein Size:	79 kDa
Gene Name:	actin filament associated protein 1 like 1
Database Link:	NP_001139809 Entrez Gene 134265 Human Q8TED9
Background:	AFAP1L1 may be involved in podosome and invadosome formation.
Synonyms:	FLJ36748; MGC149773
Note:	Immunogen sequence homology: Dog: 100%; Pig: 100%; Rat: 100%; Horse: 100%; Human: 100%; Mouse: 100%; Bovine: 100%; Rabbit: 100%; Guinea pig: 100%; Zebrafish: 86%



[View online »](#)

Product images:



Host: Rabbit; Target Name: AFAP1L1; Sample
Tissue: Jurkat Whole Cell lysates; Antibody
Dilution: 1.0ug/ml