

## Product datasheet for **TA332173**

### KDM3A / JHDM2A (KDM3A) Rabbit Polyclonal Antibody

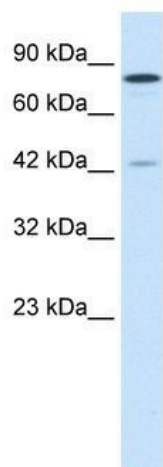
#### Product data:

Product Type:	Primary Antibodies
Applications:	IHC, WB
Recommended Dilution:	WB, IHC
Reactivity:	Human
Host:	Rabbit
Isotype:	IgG
Clonality:	Polyclonal
Immunogen:	The immunogen for Anti-JMJD1A Antibody: synthetic peptide directed towards the C terminal of human JMJD1A. Synthetic peptide located within the following region: HNLYSCKVAEDFVSPEHVKHCFWLTQEFRYLSQHTNHHEDKLQVKNVIY
Formulation:	Liquid. Purified antibody supplied in 1x PBS buffer with 0.09% (w/v) sodium azide and 2% sucrose. <i>Note that this product is shipped as lyophilized powder to China customers.</i>
Conjugation:	Unconjugated
Storage:	Store at -20°C as received.
Stability:	Stable for 12 months from date of receipt.
Predicted Protein Size:	147 kDa
Gene Name:	lysine demethylase 3A
Database Link:	<a href="#">NP_001140160</a> <a href="#">Entrez Gene 55818 Human</a> <a href="#">Q9Y4C1</a>
Background:	JMJD1A is a zinc finger protein that contains a jumonji domain.
Synonyms:	JHDM2A; JHMD2A; JMJD1; JMJD1A; TSGA
Note:	Immunogen sequence homology: Dog: 100%; Pig: 100%; Rat: 100%; Horse: 100%; Human: 100%; Mouse: 100%; Bovine: 100%; Rabbit: 100%; Guinea pig: 100%; Zebrafish: 92%

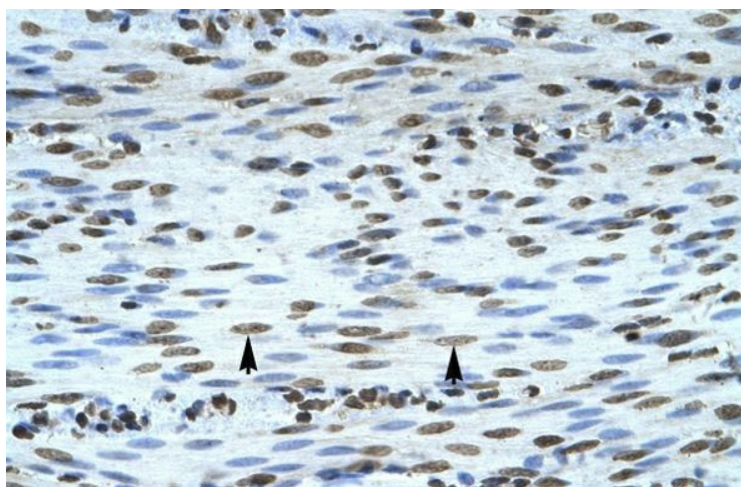


[View online »](#)

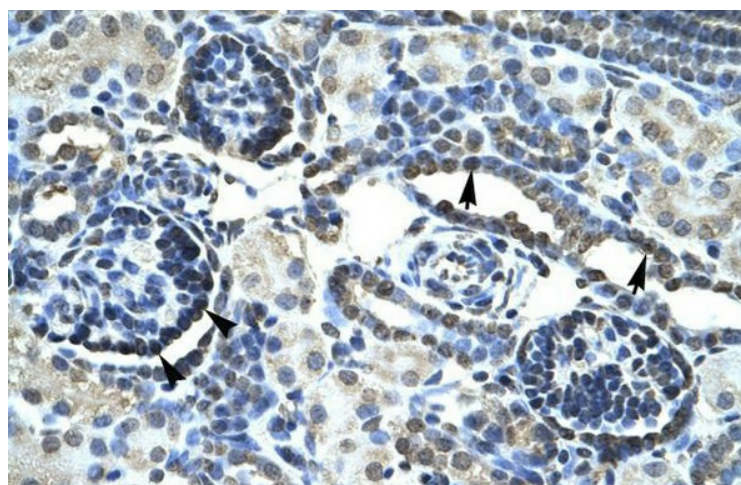
## Product images:



WB Suggested Anti-JMJD1A Antibody Titration: 1.0ug/ml; Positive Control: Jurkat cell lysate  
KDM3A is supported by BioGPS gene expression data to be expressed in Jurkat



Human Smooth Muscle



Human kidney