

Product datasheet for **TA332172**

KDM4C Rabbit Polyclonal Antibody

Product data:

Product Type:	Primary Antibodies
Applications:	WB
Recommended Dilution:	WB
Reactivity:	Human
Host:	Rabbit
Isotype:	IgG
Clonality:	Polyclonal
Immunogen:	The immunogen for Anti-JMJD2C Antibody: synthetic peptide directed towards the middle region of human JMJD2C. Synthetic peptide located within the following region: CLCNLRGGALKQTKNNKWAHVMCAVAVPEVRFTNVPERTQIDVGRIPLQR
Formulation:	Liquid. Purified antibody supplied in 1x PBS buffer with 0.09% (w/v) sodium azide and 2% sucrose. <i>Note that this product is shipped as lyophilized powder to China customers.</i>
Conjugation:	Unconjugated
Storage:	Store at -20°C as received.
Stability:	Stable for 12 months from date of receipt.
Predicted Protein Size:	89 kDa
Gene Name:	lysine demethylase 4C
Database Link:	NP_001140167 Entrez Gene 23081 Human Q9H3R0
Background:	JMJD2C is a member of the Jumonji domain 2 (JMJD2) family. It contains one JmjC domain, one JmjN domain, two PHD-type zinc fingers, and two Tudor domains. This nuclear protein functions as a trimethylation-specific demethylase, converting specific trimethylated histone residues to the dimethylated form. Chromosomal aberrations and increased transcriptional expression of this gene are associated with esophageal squamous cell carcinoma.
Synonyms:	GASC1; JHDM3C; JMJD2C; TDRD14C

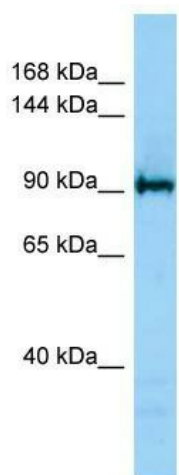


[View online »](#)

Note: Immunogen sequence homology: Dog: 100%; Pig: 100%; Rat: 100%; Horse: 100%; Human: 100%; Mouse: 100%; Bovine: 100%; Rabbit: 100%; Guinea pig: 93%

Protein Families: Druggable Genome, Transcription Factors

Product images:



Host: Rabbit; Target Name: JMJD2C; Antibody Dilution: 1.0ug/ml; Sample Tissue: Jurkat cell lysate