

Product datasheet for **TA332171**

Dusp15 Rabbit Polyclonal Antibody

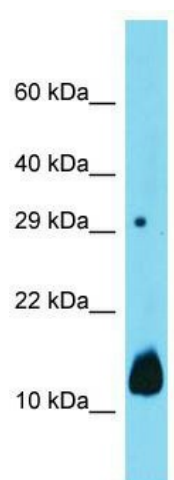
Product data:

Product Type:	Primary Antibodies
Applications:	WB
Recommended Dilution:	WB
Reactivity:	Mouse
Host:	Rabbit
Isotype:	IgG
Clonality:	Polyclonal
Immunogen:	The immunogen for Anti-Dusp15 Antibody is: synthetic peptide directed towards the middle region of Mouse Dusp15. Synthetic peptide located within the following region: EERFGIPIFRDEEDLRALLPLCRRRCRQGSATSAASATTASSAAEGLQRL
Formulation:	Liquid. Purified antibody supplied in 1x PBS buffer with 0.09% (w/v) sodium azide and 2% sucrose. <i>Note that this product is shipped as lyophilized powder to China customers.</i>
Conjugation:	Unconjugated
Storage:	Store at -20°C as received.
Stability:	Stable for 12 months from date of receipt.
Predicted Protein Size:	25 kDa
Gene Name:	dual specificity phosphatase-like 15
Database Link:	NP_001152848 Entrez Gene 252864 Mouse Q8R4V2
Background:	The function of this protein remains unknown.
Synonyms:	bA243J16.6; C20orf57; FLJ40111; VHY
Note:	Immunogen sequence homology: Human: 100%; Pig: 93%; Bovine: 93%; Rabbit: 93%; Dog: 86%; Rat: 86%; Mouse: 86%



[View online »](#)

Product images:



Host: Rabbit; Target Name: Dusp15; Sample
Tissue: Mouse Kidney lysates; Antibody Dilution:
1.0ug/ml