

Product datasheet for **TA332170**

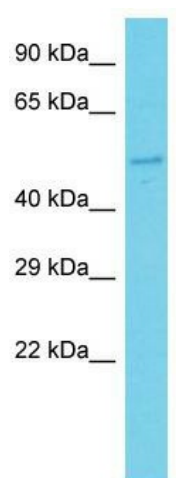
FBXW12 Rabbit Polyclonal Antibody

Product data:

Product Type:	Primary Antibodies
Applications:	WB
Recommended Dilution:	WB
Reactivity:	Human
Host:	Rabbit
Isotype:	IgG
Clonality:	Polyclonal
Immunogen:	The immunogen for Anti-FBXW12 Antibody is: synthetic peptide directed towards the C-terminal region of Human FBXW12. Synthetic peptide located within the following region: CASACWTPKVKNRITLMSQSSTGKKTEFITFDLTTKKTGGQTVIQAYEIA
Formulation:	Liquid. Purified antibody supplied in 1x PBS buffer with 0.09% (w/v) sodium azide and 2% sucrose. <i>Note that this product is shipped as lyophilized powder to China customers.</i>
Conjugation:	Unconjugated
Storage:	Store at -20°C as received.
Stability:	Stable for 12 months from date of receipt.
Predicted Protein Size:	48 kDa
Gene Name:	F-box and WD repeat domain containing 12
Database Link:	NP_001153401 Entrez Gene 285231 Human Q6X9E4
Background:	Members of the F-box protein family, such as FBXW12, are characterized by an approximately 40-amino acid F-box motif. SCF complexes, formed by SKP1, cullin, and F-box proteins, act as protein-ubiquitin ligases. F-box proteins interact with SKP1 through the F box, and they interact with ubiquitination targets through other protein interaction domains.
Synonyms:	FBW12; FBXO12; FBXO35
Note:	Immunogen sequence homology: Human: 100%
Protein Families:	Druggable Genome



[View online »](#)

Product images:

Host: Rabbit; Target Name: FBXW12; Sample Tissue: Fetal Brain lysates; Antibody Dilution: 1.0ug/ml