

Product datasheet for **TA332168**

FAM172A Rabbit Polyclonal Antibody

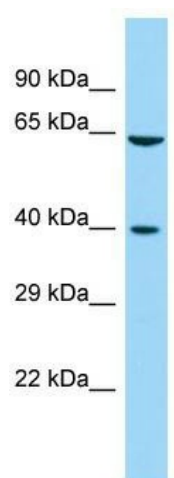
Product data:

Product Type:	Primary Antibodies
Applications:	WB
Recommended Dilution:	WB
Reactivity:	Human
Host:	Rabbit
Isotype:	IgG
Clonality:	Polyclonal
Immunogen:	The immunogen for Anti-FAM172A Antibody is: synthetic peptide directed towards the middle region of Human FAM172A. Synthetic peptide located within the following region: SSDSSDEPAEKRRERKDKVSKETKKRRDFYEKYRNPQREKEMMQLYIRENG
Formulation:	Liquid. Purified antibody supplied in 1x PBS buffer with 0.09% (w/v) sodium azide and 2% sucrose. <i>Note that this product is shipped as lyophilized powder to China customers.</i>
Conjugation:	Unconjugated
Storage:	Store at -20°C as received.
Stability:	Stable for 12 months from date of receipt.
Predicted Protein Size:	40 kDa
Gene Name:	family with sequence similarity 172 member A
Database Link:	NP_001156889 Entrez Gene 83989 Human Q8WUF8
Background:	The function of this protein remains unknown.
Synonyms:	C5orf21
Note:	Immunogen sequence homology: Dog: 100%; Rat: 100%; Horse: 100%; Human: 100%; Rabbit: 100%; Mouse: 93%; Yeast: 83%



[View online »](#)

Product images:



Host: Rabbit; Target Name: FAM172A; Sample
Tissue: Fetal Kidney lysates; Antibody Dilution:
1.0ug/ml