

Product datasheet for TA332166

H2BW2 Rabbit Polyclonal Antibody

Product data:

Product Type:	Primary Antibodies
Applications:	WB
Recommended Dilution:	WB
Reactivity:	Human
Host:	Rabbit
Isotype:	IgG
Clonality:	Polyclonal
Immunogen:	The immunogen for Anti-H2BFM Antibody is: synthetic peptide directed towards the middle region of Human H2BFM. Synthetic peptide located within the following region: SCYLMAAASAMAEASSETTSEEGQSIQEPKEANSTKAQKQKRRGCRGSR
Formulation:	Liquid. Purified antibody supplied in 1x PBS buffer with 0.09% (w/v) sodium azide and 2% sucrose. <i>Note that this product is shipped as lyophilized powder to China customers.</i>
Purification:	Affinity Purified
Conjugation:	Unconjugated
Storage:	Store at -20°C as received.
Stability:	Stable for 12 months from date of receipt.
Predicted Protein Size:	28 kDa
Gene Name:	H2B histone family member M
Database Link:	NP_001157888 Entrez Gene 286436 Human POC1H6
Background:	H2BFM is a core component of nucleosome. Nucleosomes wrap and compact DNA into chromatin, limiting DNA accessibility to the cellular machineries which require DNA as a template. Histones thereby play a central role in transcription regulation, DNA repair, DNA replication and chromosomal stability. DNA accessibility is regulated via a complex set of post-translational modifications of histones, also called histone code, and nucleosome remodeling.



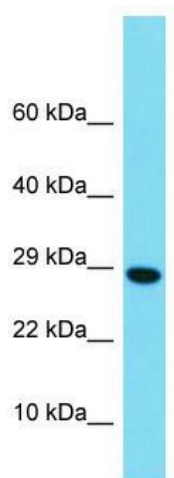
[View online »](#)

Synonyms: 1700014N06Rik; H2bfw; H2bl2; RP23-389M3.2

Note: Immunogen sequence homology: Human: 100%

Protein Pathways: Systemic lupus erythematosus

Product images:



Host: Rabbit; Target Name: H2BFM; Sample
Tissue: Fetal Brain lysates; Antibody Dilution:
1.0ug/ml