

Product datasheet for **TA332163**

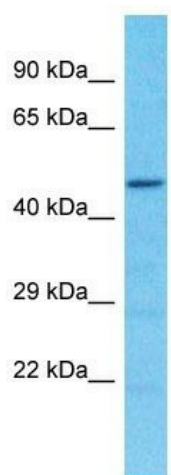
SPDYE2B Rabbit Polyclonal Antibody

Product data:

Product Type:	Primary Antibodies
Applications:	WB
Recommended Dilution:	WB
Reactivity:	Human
Host:	Rabbit
Isotype:	IgG
Clonality:	Polyclonal
Immunogen:	The immunogen for Anti-SPDYE2B Antibody is: synthetic peptide directed towards the N-terminal region of Human SPDYE2B. Synthetic peptide located within the following region: GKITTSRQPHPQNEQSPQRSTSGYPLQEVDDEMLGPSAPGVDPSPPCRS
Formulation:	Liquid. Purified antibody supplied in 1x PBS buffer with 0.09% (w/v) sodium azide and 2% sucrose.
Conjugation:	Unconjugated
Storage:	Store at -20°C as received.
Stability:	Stable for 12 months from date of receipt.
Predicted Protein Size:	48 kDa
Gene Name:	speedy/RINGO cell cycle regulator family member E2B
Database Link:	NP_001159811 Entrez Gene 100310812 Human A6NHP3
Background:	The function of this protein remains unknown.
Synonyms:	SPDYE2L
Note:	Immunogen sequence homology: Human: 100%; Mouse: 75%


[View online »](#)

Product images:



Host: Rabbit
Target Name: SPDYE2B
Sample Tissue: Hela Cell Lysate
Antibody Dilution: 1.0µg/ml

Host: Rabbit; Target Name: SPDYE2B; Sample
Tissue: Hela Whole Cell lysates; Antibody Dilution:
1.0ug/ml