

## Product datasheet for **TA332162**

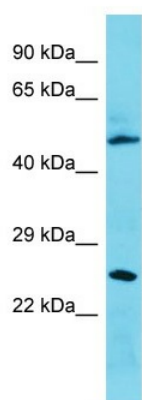
### C3orf26 Rabbit Antibody

#### Product data:

Product Type:	Primary Antibodies
Reactivity:	Human
Host:	Rabbit
Isotype:	IgG
Immunogen:	The immunogen for Anti-C3orf26 Antibody is: synthetic peptide directed towards the N-terminal region of Human C3orf26. Synthetic peptide located within the following region: EASDGEGEGDTEVMQQETVPVPVPSEKTKQPKCEFLIQPKERKENTTKTR
Formulation:	Shipped as lyophilized powder. Purified antibody supplied in 1x PBS buffer with 0.09% (w/v) sodium azide and 2% sucrose.
Conjugation:	Unconjugated
Storage:	Store at -20°C as received.
Stability:	Stable for 12 months from date of receipt.
Predicted Protein Size:	28 kDa
Database Link:	<a href="#">NP_001161396</a> <a href="#">Entrez Gene 84319 Human</a>
Background:	The function of this protein remains unknown.
Synonyms:	C3orf26
Note:	Immunogen sequence homology: Human: 100%; Rat: 86%; Dog: 81%; Pig: 81%; Rabbit: 81%; Mouse: 79%



[View online »](#)

**Product images:**

Host: Rabbit  
Target Name: C3orf26  
Sample Type: 721\_B Whole Cell lysates  
Antibody Dilution: 1.0ug/ml