

## Product datasheet for **TA332161**

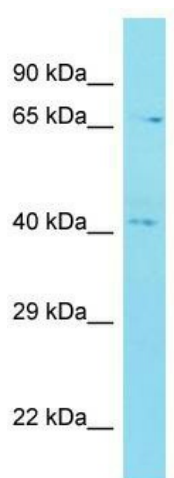
### C12orf56 Rabbit Polyclonal Antibody

#### Product data:

Product Type:	Primary Antibodies
Applications:	WB
Recommended Dilution:	WB
Reactivity:	Human
Host:	Rabbit
Isotype:	IgG
Clonality:	Polyclonal
Immunogen:	The immunogen for Anti-C12orf56 Antibody is: synthetic peptide directed towards the N-terminal region of Human C12orf56. Synthetic peptide located within the following region: KESPLRDQQESSTPSKDSTLCPRPGLKSLHGQGAFRPLPSRRSQS
Formulation:	Liquid. Purified antibody supplied in 1x PBS buffer with 0.09% (w/v) sodium azide and 2% sucrose.
Conjugation:	Unconjugated
Storage:	Store at -20°C as received.
Stability:	Stable for 12 months from date of receipt.
Predicted Protein Size:	68 kDa
Gene Name:	chromosome 12 open reading frame 56
Database Link:	<a href="#">NP_001164104</a> <a href="#">Entrez Gene 115749 Human</a> <a href="#">Q8IXR9</a>
Background:	The function of this protein remains unknown.
Synonyms:	C12orf56
Note:	Immunogen sequence homology: Human: 100%; Mouse: 85%



[View online »](#)

**Product images:**

Host: Rabbit; Target Name: C12orf56; Sample  
Tissue: MDA-MB-4355 Whole Cell lysates;  
Antibody Dilution: 1.0ug/ml