

Product datasheet for TA332160

NIPAL4 Rabbit Polyclonal Antibody

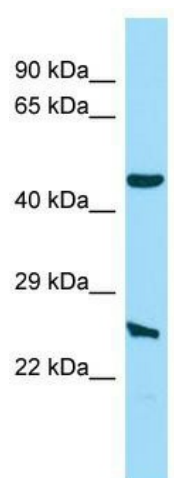
Product data:

Product Type:	Primary Antibodies
Applications:	WB
Recommended Dilution:	WB
Reactivity:	Human
Host:	Rabbit
Isotype:	IgG
Clonality:	Polyclonal
Immunogen:	The immunogen for Anti-NIPAL4 Antibody is: synthetic peptide directed towards the N-terminal region of Human NIPAL4. Synthetic peptide located within the following region: LGPDPGGFSRASHAGDKSRPPAPELGSPGAVRPRVGSCAPGPMELRVSNT
Formulation:	Liquid. Purified antibody supplied in 1x PBS buffer with 0.09% (w/v) sodium azide and 2% sucrose. <i>Note that this product is shipped as lyophilized powder to China customers.</i>
Conjugation:	Unconjugated
Storage:	Store at -20°C as received.
Stability:	Stable for 12 months from date of receipt.
Predicted Protein Size:	49 kDa
Gene Name:	NIPA like domain containing 4
Database Link:	NP_001165763 Entrez Gene 348938 Human Q0D2K0
Background:	This gene likely encodes a membrane receptor. Mutations in this gene have been associated with autosomal recessive congenital ichthyosis.
Synonyms:	ARCI6; ICHTHYIN; ICHYN
Note:	Immunogen sequence homology: Human: 100%
Protein Families:	Transmembrane



[View online »](#)

Product images:



Host: Rabbit; Target Name: NIPAL4; Sample
Tissue: HeLa Whole Cell lysates; Antibody Dilution:
1.0ug/ml