

Product datasheet for **TA332159**

Interleukin 34 (IL34) Rabbit Polyclonal Antibody

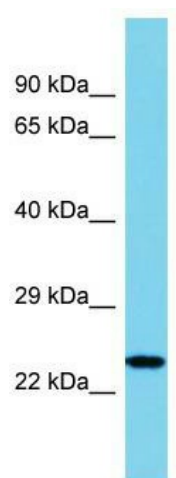
Product data:

Product Type:	Primary Antibodies
Applications:	WB
Recommended Dilution:	WB
Reactivity:	Human
Host:	Rabbit
Isotype:	IgG
Clonality:	Polyclonal
Immunogen:	The immunogen for Anti-IL34 Antibody is: synthetic peptide directed towards the N-terminal region of Human IL34. Synthetic peptide located within the following region: ALGNEPLEMWPLTQNEECTVTGFLRDKLQYRSRLQYMKHYFPINYKISVP
Formulation:	Liquid. Purified antibody supplied in 1x PBS buffer with 0.09% (w/v) sodium azide and 2% sucrose. <i>Note that this product is shipped as lyophilized powder to China customers.</i>
Conjugation:	Unconjugated
Storage:	Store at -20°C as received.
Stability:	Stable for 12 months from date of receipt.
Predicted Protein Size:	26 kDa
Gene Name:	interleukin 34
Database Link:	NP_001166242 Entrez Gene 146433 Human Q6ZMJ4
Background:	Interleukin-34 is a cytokine that promotes the differentiation and viability of monocytes and macrophages through the colony-stimulating factor-1 receptor.
Synonyms:	C16orf77; IL-34
Note:	Immunogen sequence homology: Human: 100%; Dog: 93%; Horse: 86%



[View online »](#)

Product images:



Host: Rabbit; Target Name: IL34; Sample Tissue:
U937 Whole Cell lysates; Antibody Dilution:
1.0ug/ml