

## Product datasheet for **TA332158**

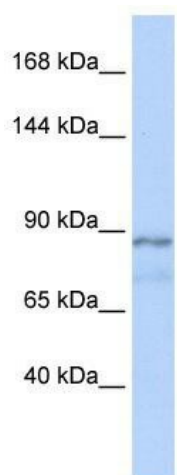
### ZFAT Rabbit Polyclonal Antibody

#### Product data:

Product Type:	Primary Antibodies
Applications:	WB
Recommended Dilution:	WB
Reactivity:	Human
Host:	Rabbit
Isotype:	IgG
Clonality:	Polyclonal
Immunogen:	The immunogen for Anti-ZFAT1 Antibody: synthetic peptide directed towards the middle region of human ZFAT1. Synthetic peptide located within the following region: KHIRDAHDPQDKKVKKEALDELCLMTREGKRQLLYDCHICERKFKNELDRD
Formulation:	Liquid. Purified antibody supplied in 1x PBS buffer with 0.09% (w/v) sodium azide and 2% sucrose.
Conjugation:	Unconjugated
Storage:	Store at -20°C as received.
Stability:	Stable for 12 months from date of receipt.
Predicted Protein Size:	94 kDa
Gene Name:	zinc finger and AT-hook domain containing
Database Link:	<a href="#">NP_001167629</a> <a href="#">Entrez Gene 57623 Human</a> <a href="#">Q9P243</a>
Background:	ZFAT1 may be involved in transcriptional regulation. Overexpression of ZFAT1 causes down-regulation of a number of genes involved in the immune response. Some genes are also up-regulated.
Synonyms:	AITD3; ZFAT1; ZNF406
Note:	Immunogen sequence homology: Horse: 100%; Human: 100%; Dog: 92%; Pig: 92%; Rat: 92%; Mouse: 92%; Bovine: 92%; Rabbit: 92%; Guinea pig: 92%



[View online »](#)

**Product images:**

WB Suggested Anti-ZFAT1 Antibody Titration: 0.2-1 ug/ml; ELISA Titer: 1: 312500; Positive Control: Human Muscle