

Product datasheet for **TA332157**

BAPX1 (NKX3-2) Rabbit Polyclonal Antibody

Product data:

Product Type:	Primary Antibodies
Applications:	WB
Recommended Dilution:	WB
Reactivity:	Human
Host:	Rabbit
Isotype:	IgG
Clonality:	Polyclonal
Immunogen:	The immunogen for Anti-NKX3-2 Antibody: synthetic peptide directed towards the middle region of human NKX3-2. Synthetic peptide located within the following region: KIWFQNRRYKTKRRQMAADLLASAPAAKKVAVKVLVRDDQRQYLPGEVLR
Formulation:	Liquid. Purified antibody supplied in 1x PBS buffer with 0.09% (w/v) sodium azide and 2% sucrose. <i>Note that this product is shipped as lyophilized powder to China customers.</i>
Conjugation:	Unconjugated
Storage:	Store at -20°C as received.
Stability:	Stable for 12 months from date of receipt.
Predicted Protein Size:	35 kDa
Gene Name:	NK3 homeobox 2
Database Link:	NP_001180 Entrez Gene 579 Human P78367



[View online »](#)

Background:

Nkx2-2 contains 1 homeobox DNA-binding domain which is essential for interaction with OLIG2. Nkx2-2 may be involved in specifying diencephalic neuromeric boundaries, and in controlling the expression of genes that play a role in axonal guidance. This gene encodes a member of the NK family of homeobox-containing proteins. The encoded protein may play a role in skeletal development. Sequence Note: This RefSeq record was created from transcript and genomic sequence data because no single transcript was available for the full length of the gene. The extent of this transcript is supported by transcript alignments.

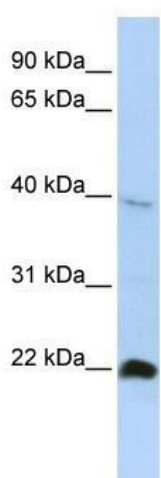
PRIMARYREFSEQ_SPAN PRIMARY_IDENTIFIER PRIMARY_SPAN COMP 1-1111 BC111966.1 1-1111 1112-2241 AC006445.11 110916-112045

Synonyms:

BAPX1; NKX3.2; NKX3B; SMMD

Note:

Immunogen sequence homology: Dog: 100%; Pig: 100%; Rat: 100%; Human: 100%; Mouse: 100%; Bovine: 100%; Rabbit: 100%; Guinea pig: 100%; Zebrafish: 93%

Product images:

WB Suggested Anti-NKX3-2 Antibody Titration:
0.2-1 ug/ml; ELISA Titer: 1: 62500; Positive
Control: HepG2 cell lysate