

Product datasheet for **TA332155**

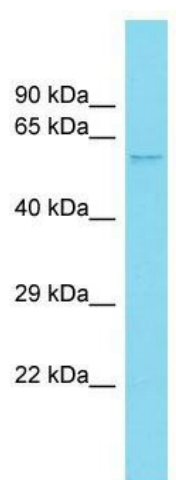
Ccdc85a Rabbit Polyclonal Antibody

Product data:

Product Type:	Primary Antibodies
Applications:	WB
Recommended Dilution:	WB
Reactivity:	Rat
Host:	Rabbit
Isotype:	IgG
Clonality:	Polyclonal
Immunogen:	The immunogen for Anti-Ccdc85a Antibody is: synthetic peptide directed towards the middle region of Rat Ccdc85a. Synthetic peptide located within the following region: YSGMNESTLSYVRQLEARVRQLEENRMLPQATQNRSQPPTRNSSNMEKG
Formulation:	Liquid. Purified antibody supplied in 1x PBS buffer with 0.09% (w/v) sodium azide and 2% sucrose.
Conjugation:	Unconjugated
Storage:	Store at -20°C as received.
Stability:	Stable for 12 months from date of receipt.
Predicted Protein Size:	59 kDa
Gene Name:	coiled-coil domain containing 85A
Database Link:	NP_001178482 Entrez Gene 289855 Rat
Background:	The function of this protein remains unknown.
Synonyms:	KIAA1912
Note:	Immunogen sequence homology: Pig: 100%; Human: 100%; Guinea pig: 100%; Dog: 93%; Horse: 93%; Rat: 86%; Mouse: 86%



[View online »](#)

Product images:

Host: Rabbit; Target Name: Ccdc85a; Sample
Tissue: Rat Lung lysates; Antibody Dilution:
1.0ug/ml