

## Product datasheet for **TA332152**

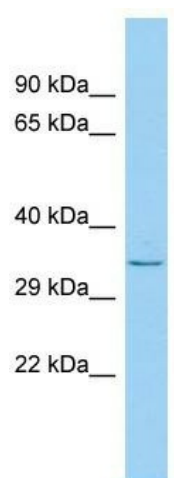
### PLD5 Rabbit Polyclonal Antibody

#### Product data:

Product Type:	Primary Antibodies
Applications:	WB
Recommended Dilution:	WB
Reactivity:	Human
Host:	Rabbit
Isotype:	IgG
Clonality:	Polyclonal
Immunogen:	The immunogen for Anti-PLD5 Antibody is: synthetic peptide directed towards the C-terminal region of Human PLD5. Synthetic peptide located within the following region: SSLKAICTEIANCSLKVKFFDLERENACATKEQKNHTFPRLNRNKYMVTD
Formulation:	Liquid. Purified antibody supplied in 1x PBS buffer with 0.09% (w/v) sodium azide and 2% sucrose.
Conjugation:	Unconjugated
Storage:	Store at -20°C as received.
Stability:	Stable for 12 months from date of receipt.
Predicted Protein Size:	36 kDa
Gene Name:	phospholipase D family member 5
Database Link:	<a href="#">NP_001182741</a> <a href="#">Entrez Gene 200150 Human</a> <a href="#">Q8N7P1</a>
Background:	The function of this protein remains unknown.
Synonyms:	PLDC
Note:	Immunogen sequence homology: Horse: 100%; Human: 100%; Pig: 93%; Rat: 93%; Mouse: 93%; Guinea pig: 93%; Dog: 85%; Bovine: 79%



[View online »](#)

**Product images:**

Host: Rabbit; Target Name: PLD5; Sample Tissue: Fetal Lung lysates; Antibody Dilution: 1.0ug/ml