

Product datasheet for **TA332149**

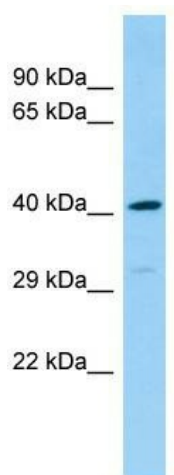
DEF8 Rabbit Polyclonal Antibody

Product data:

Product Type:	Primary Antibodies
Applications:	WB
Recommended Dilution:	WB
Reactivity:	Human
Host:	Rabbit
Isotype:	IgG
Clonality:	Polyclonal
Immunogen:	The immunogen for Anti-DEF8 Antibody is: synthetic peptide directed towards the N-terminal region of Human DEF8. Synthetic peptide located within the following region: PNEDEPNIRVLLLEHRFYKEKSKSVKQTCDKCNTIIWGLIQTWYTCTGCYY
Formulation:	Liquid. Purified antibody supplied in 1x PBS buffer with 0.09% (w/v) sodium azide and 2% sucrose.
Conjugation:	Unconjugated
Storage:	Store at -20°C as received.
Stability:	Stable for 12 months from date of receipt.
Predicted Protein Size:	43 kDa
Gene Name:	differentially expressed in FDCP 8 homolog (mouse)
Database Link:	NP_001229746 Entrez Gene 54849 Human Q6ZN54
Background:	The function of this protein remains unknown.
Synonyms:	FLJ20186; MGC104349
Note:	Immunogen sequence homology: Dog: 100%; Pig: 100%; Rat: 100%; Human: 100%; Mouse: 100%; Bovine: 100%; Rabbit: 100%; Guinea pig: 100%; Horse: 93%; Zebrafish: 92%



[View online »](#)

Product images:

Host: Rabbit; Target Name: DEF8; Sample Tissue: Fetal Heart lysates; Antibody Dilution: 1.0ug/ml