

Product datasheet for **TA332148**

ENTPD6 Rabbit Polyclonal Antibody

Product data:

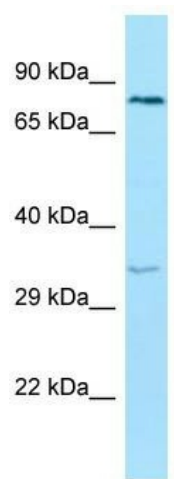
Product Type:	Primary Antibodies
Applications:	WB
Recommended Dilution:	WB
Reactivity:	Human
Host:	Rabbit
Isotype:	IgG
Clonality:	Polyclonal
Immunogen:	The immunogen for Anti-ENTPD6 Antibody is: synthetic peptide directed towards the C-terminal region of Human ENTPD6. Synthetic peptide located within the following region: ALRMFNRTYKLYSYSYLGLGLMSARLAILGGVEGQPAKDGKELVSPCLSP
Formulation:	Liquid. Purified antibody supplied in 1x PBS buffer with 0.09% (w/v) sodium azide and 2% sucrose. <i>Note that this product is shipped as lyophilized powder to China customers.</i>
Purification:	Affinity Purified
Conjugation:	Unconjugated
Storage:	Store at -20°C as received.
Stability:	Stable for 12 months from date of receipt.
Predicted Protein Size:	34 kDa
Gene Name:	ectonucleoside triphosphate diphosphohydrolase 6 (putative)
Database Link:	NP_001238 Entrez Gene 955 Human O75354
Background:	The function of this protein remains unknown.
Synonyms:	CD39L2; dj738P15.3; IL-6SAG; IL6ST2; NTPDase-6
Note:	Immunogen sequence homology: Human: 100%; Pig: 93%; Guinea pig: 93%; Rat: 86%; Horse: 86%; Rabbit: 86%
Protein Families:	Secreted Protein, Transmembrane



[View online »](#)

Protein Pathways: Purine metabolism, Pyrimidine metabolism

Product images:



Host: Rabbit; Target Name: ENTPD6; Sample
Tissue: HeLa Whole cell lysates; Antibody Dilution:
1.0ug/ml