

Product datasheet for **TA332147**

CDC27 Rabbit Polyclonal Antibody

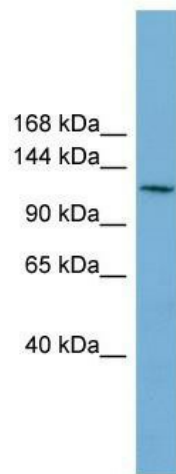
Product data:

Product Type:	Primary Antibodies
Applications:	WB
Recommended Dilution:	WB
Reactivity:	Human
Host:	Rabbit
Isotype:	IgG
Clonality:	Polyclonal
Immunogen:	The immunogen for Anti-CDC27 Antibody: synthetic peptide directed towards the middle region of human CDC27. Synthetic peptide located within the following region: KLKMKFPPKIPNRKTKSKTNKGGITQPNINDSLEITKLDSSIISEKIST
Formulation:	Liquid. Purified antibody supplied in 1x PBS buffer with 0.09% (w/v) sodium azide and 2% sucrose. <i>Note that this product is shipped as lyophilized powder to China customers.</i>
Conjugation:	Unconjugated
Storage:	Store at -20°C as received.
Stability:	Stable for 12 months from date of receipt.
Predicted Protein Size:	92 kDa
Gene Name:	cell division cycle 27
Database Link:	NP_001247 Entrez Gene 996 Human P30260



[View online »](#)

Background:	The protein encoded by this gene shares strong similarity with <i>Saccharomyces cerevisiae</i> protein Cdc27, and the gene product of <i>Schizosaccharomyces pombe</i> nuc 2. This protein is a component of anaphase-promoting complex (APC), which is composed of eight protein subunits and highly conserved in eucaryotic cells. APC catalyzes the formation of cyclin B-ubiquitin conjugate that is responsible for the ubiquitin-mediated proteolysis of B-type cyclins. This protein and 3 other members of the APC complex contain the TPR (tetratricopeptide repeat), a protein domain important for protein-protein interaction. This protein was shown to interact with mitotic checkpoint proteins including Mad2, p55CDC and BUBR1, and thus may be involved in controlling the timing of mitosis. Alternatively spliced transcript variants encoding different isoforms have been found for this gene.
Synonyms:	ANAPC3; APC3; CDC27Hs; D0S1430E; D17S978E; H-NUC; HNUC; NUC2
Note:	Immunogen sequence homology: Dog: 100%; Pig: 100%; Rat: 100%; Horse: 100%; Human: 100%; Bovine: 100%; Rabbit: 100%; Guinea pig: 100%
Protein Families:	Druggable Genome
Protein Pathways:	Cell cycle, Oocyte meiosis, Progesterone-mediated oocyte maturation, Ubiquitin mediated proteolysis

Product images:

WB Suggested Anti-CDC27 Antibody Titration: 0.2-1 ug/ml; ELISA Titer: 1: 1562500; Positive Control: NCI-H226 cell lysate. CDC27 is strongly supported by BioGPS gene expression data to be expressed in NCI-H226