

Product datasheet for **TA332145**

C3orf32 (SSUH2) Rabbit Polyclonal Antibody

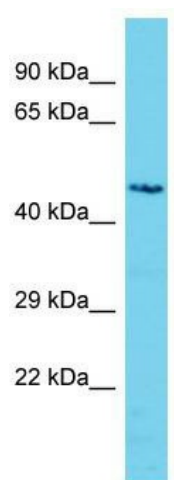
Product data:

Product Type:	Primary Antibodies
Applications:	WB
Recommended Dilution:	WB
Reactivity:	Human
Host:	Rabbit
Isotype:	IgG
Clonality:	Polyclonal
Immunogen:	The immunogen for Anti-C3orf32 Antibody is: synthetic peptide directed towards the middle region of Human C3orf32. Synthetic peptide located within the following region: GRYKCSGCHGAGTVRCPSCCGAKRKAKQSRRCLCAGSGRRRCSTCSGRG
Formulation:	Liquid. Purified antibody supplied in 1x PBS buffer with 0.09% (w/v) sodium azide and 2% sucrose.
Conjugation:	Unconjugated
Storage:	Store at -20°C as received.
Stability:	Stable for 12 months from date of receipt.
Predicted Protein Size:	41 kDa
Gene Name:	ssu-2 homolog (C. elegans)
Database Link:	NP_001243677 Entrez Gene 51066 Human Q9Y2M2
Background:	The function of this protein remains unknown.
Synonyms:	C3orf32; fls485; SSU-2
Note:	Immunogen sequence homology: Human: 100%; Dog: 93%; Pig: 79%; Horse: 79%; Mouse: 79%; Bovine: 79%



[View online »](#)

Product images:



Host: Rabbit; Target Name: C3orf32; Sample
Tissue: Jurkat Whole Cell lysates; Antibody
Dilution: 1.0ug/ml