

## Product datasheet for **TA332144**

### SERINC4 Rabbit Polyclonal Antibody

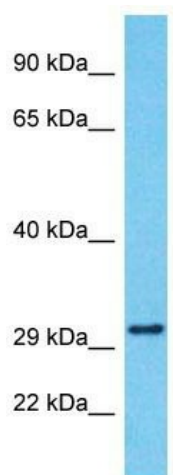
#### Product data:

Product Type:	Primary Antibodies
Applications:	WB
Recommended Dilution:	WB
Reactivity:	Human
Host:	Rabbit
Isotype:	IgG
Clonality:	Polyclonal
Immunogen:	The immunogen for Anti-SERINC4 Antibody is: synthetic peptide directed towards the middle region of Human SERINC4. Synthetic peptide located within the following region: IVKVSYEFQKPSLCFCCPETVEADKGQRGGAARPADQETPPAPPVQVQH
Formulation:	Liquid. Purified antibody supplied in 1x PBS buffer with 0.09% (w/v) sodium azide and 2% sucrose. <i>Note that this product is shipped as lyophilized powder to China customers.</i>
Conjugation:	Unconjugated
Storage:	Store at -20°C as received.
Stability:	Stable for 12 months from date of receipt.
Predicted Protein Size:	30 kDa
Gene Name:	serine incorporator 4
Database Link:	<a href="#">NP_001244961</a> <a href="#">Entrez Gene 619189 Human</a> <a href="#">A6NH21</a>
Background:	SERINC4 incorporates a polar amino acid serine into membranes and facilitates the synthesis of two serine-derived lipids, phosphatidylserine and sphingolipids.
Synonyms:	FLJ40363
Note:	Immunogen sequence homology: Human: 100%; Horse: 77%; Rabbit: 77%
Protein Families:	Transmembrane



[View online »](#)

## Product images:



Host: Rabbit  
Target Name: SERINC4  
Sample Tissue: MCF7 Cell Lysate  
Antibody Dilution: 1.0µg/ml

Host: Rabbit; Target Name: SERINC4; Sample  
Tissue: MCF7 Whole Cell lysates; Antibody  
Dilution: 1.0ug/ml