

## Product datasheet for **TA332143**

### Ppfia3 Rabbit Polyclonal Antibody

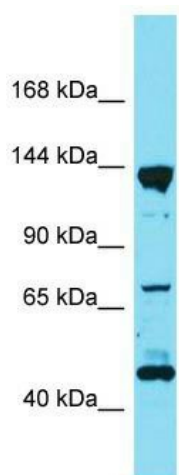
#### Product data:

Product Type:	Primary Antibodies
Applications:	WB
Recommended Dilution:	WB
Reactivity:	Rat
Host:	Rabbit
Isotype:	IgG
Clonality:	Polyclonal
Immunogen:	The immunogen for Anti-Ppfia3 Antibody is: synthetic peptide directed towards the C-terminal region of Rat Ppfia3. Synthetic peptide located within the following region: ETFDYSDLALLLQIPTQNAQARQLLEKEFSNLISLGTDRRLDEDSAKSFS
Formulation:	Liquid. Purified antibody supplied in 1x PBS buffer with 0.09% (w/v) sodium azide and 2% sucrose.
Conjugation:	Unconjugated
Storage:	Store at -20°C as received.
Stability:	Stable for 12 months from date of receipt.
Predicted Protein Size:	133 kDa
Gene Name:	PTPRF interacting protein alpha 3
Database Link:	<a href="#">NP_001257914</a> <a href="#">Entrez Gene 140591 Rat</a>
Background:	Ppfia3 may play a role in integrating active zone proteins and synaptic vesicles.
Synonyms:	KIAA0654; liprin; LPNA3; MGC126567; MGC126569
Note:	Immunogen sequence homology: Dog: 100%; Pig: 100%; Rat: 100%; Horse: 100%; Human: 100%; Mouse: 100%; Bovine: 100%; Guinea pig: 100%; Rabbit: 77%



[View online »](#)

## Product images:



Host: Rabbit; Target Name: Ppfia3; Sample  
Tissue: Rat Lung lysates; Antibody Dilution:  
1.0ug/ml