

Product datasheet for TA332142

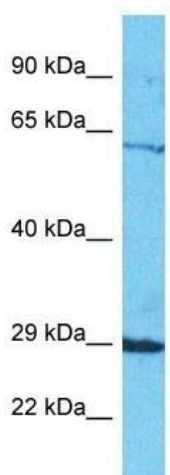
SEL1L2 Rabbit Polyclonal Antibody

Product data:

Product Type:	Primary Antibodies
Applications:	WB
Recommended Dilution:	WB
Reactivity:	Human
Host:	Rabbit
Isotype:	IgG
Clonality:	Polyclonal
Immunogen:	The immunogen for Anti-SEL1L2 Antibody is: synthetic peptide directed towards the N-terminal region of Human SEL1L2. Synthetic peptide located within the following region: GDQLFKMGIKVLQQSKSQKQKEEAYLLFAKAADMGNLKAMEKMADALLFG
Formulation:	Liquid. Purified antibody supplied in 1x PBS buffer with 0.09% (w/v) sodium azide and 2% sucrose.
Conjugation:	Unconjugated
Storage:	Store at -20°C as received.
Stability:	Stable for 12 months from date of receipt.
Predicted Protein Size:	61 kDa
Gene Name:	SEL1L2 ERAD E3 ligase adaptor subunit
Database Link:	NP_001258468 Entrez Gene 80343 Human Q5TEA6
Background:	The function of this protein remains unknown.
Synonyms:	C20orf50
Note:	Immunogen sequence homology: Human: 100%; Dog: 93%; Pig: 93%; Bovine: 93%; Rabbit: 93%; Rat: 86%; Horse: 86%; Mouse: 86%



[View online »](#)

Product images:

Host: Rabbit
Target Name: SEL1L2
Sample Tissue: HepG2 Cell Lysate
Antibody Dilution: 1.0 μ g/ml

Host: Rabbit; Target Name: SEL1L2; Sample
Tissue: HepG2 Whole Cell lysates; Antibody
Dilution: 1.0ug/ml