

Product datasheet for **TA332141**

ABCB7 Rabbit Polyclonal Antibody

Product data:

Product Type:	Primary Antibodies
Applications:	WB
Recommended Dilution:	WB
Reactivity:	Human
Host:	Rabbit
Isotype:	IgG
Clonality:	Polyclonal
Immunogen:	The immunogen for Anti-ABCB7 Antibody is: synthetic peptide directed towards the C-terminal region of Human ABCB7. Synthetic peptide located within the following region: DEATSSLDSITEETILGAMKDVVKHRTSIFIAHRLSTVVDADDEIIVLDQG
Formulation:	Liquid. Purified antibody supplied in 1x PBS buffer with 0.09% (w/v) sodium azide and 2% sucrose. <i>Note that this product is shipped as lyophilized powder to China customers.</i>
Purification:	Affinity Purified
Conjugation:	Unconjugated
Storage:	Store at -20°C as received.
Stability:	Stable for 12 months from date of receipt.
Predicted Protein Size:	78 kDa
Gene Name:	ATP binding cassette subfamily B member 7
Database Link:	NP_004290 Entrez Gene 22 Human O75027



[View online »](#)

Background:

The membrane-associated protein encoded by this gene is a member of the superfamily of ATP-binding cassette (ABC) transporters. ABC proteins transport various molecules across extra- and intra-cellular membranes. ABC genes are divided into seven distinct subfamilies (ABC1, MDR/TAP, MRP, ALD, OABP, GCN20, White). This protein is a member of the MDR/TAP subfamily. Members of the MDR/TAP subfamily are involved in multidrug resistance as well as antigen presentation. This gene encodes a half-transporter involved in the transport of heme from the mitochondria to the cytosol. With iron/sulfur cluster precursors as its substrates, this protein may play a role in metal homeostasis. Mutations in this gene have been associated with mitochondrial iron accumulation and isodicentric (X)(q13) and sideroblastic anemia. Alternatively spliced transcript variants encoding multiple isoforms have been observed for this gene.

Synonyms:

ABC7; ASAT; Atm1p; EST140535

Note:

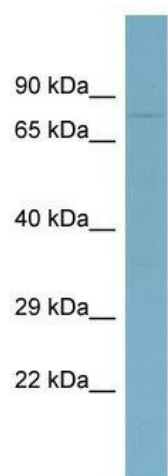
Immunogen sequence homology: Dog: 100%; Pig: 100%; Rat: 100%; Horse: 100%; Human: 100%; Mouse: 100%; Bovine: 100%; Rabbit: 100%; Guinea pig: 100%; Zebrafish: 92%; Yeast: 85%

Protein Families:

Druggable Genome, Transmembrane

Protein Pathways:

ABC transporters

Product images:

Host: Rabbit; Target Name: ABCB7; Sample Tissue: COLO205 Whole Cell lysates; Antibody Dilution: 1.0ug/ml; ABCB7 is supported by BioGPS gene expression data to be expressed in COLO205