

## Product datasheet for **TA332140**

### LDB2 Rabbit Polyclonal Antibody

#### Product data:

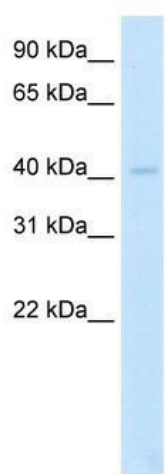
Product Type:	Primary Antibodies
Applications:	WB
Recommended Dilution:	WB
Reactivity:	Human
Host:	Rabbit
Isotype:	IgG
Clonality:	Polyclonal
Immunogen:	The immunogen for Anti-LDB2 Antibody: synthetic peptide directed towards the N terminal of human LDB2. Synthetic peptide located within the following region: DDATLTLSCLEDGPKRYTIGRTLIPRYFSTVFEGGVTDLYILKHSKES
Formulation:	Liquid. Purified antibody supplied in 1x PBS buffer with 0.09% (w/v) sodium azide and 2% sucrose. <i>Note that this product is shipped as lyophilized powder to China customers.</i>
Conjugation:	Unconjugated
Storage:	Store at -20°C as received.
Stability:	Stable for 12 months from date of receipt.
Predicted Protein Size:	43 kDa
Gene Name:	LIM domain binding 2
Database Link:	<a href="#">NP_001281</a> <a href="#">Entrez Gene 9079 Human</a> <a href="#">O43679</a>
Background:	LDB2 belongs to the LDB family. LDB2 binds to the LIM domain of a wide variety of LIM domain-containing transcription factors. LIM domains are required for both inhibitory effects on LIM homeodomain transcription factors and synergistic transcriptional activation events. The inhibitory actions of the LIM domain can often be overcome by the LIM co-regulators known as CLIM2, LDB2 and NLI. LIM homeoproteins and CLIMs are involved in a variety of developmental processes.
Synonyms:	CLIM1; LDB-2; LDB1



[View online »](#)

**Note:** Immunogen sequence homology: Dog: 100%; Pig: 100%; Rat: 100%; Horse: 100%; Human: 100%; Mouse: 100%; Rabbit: 100%; Zebrafish: 100%; Guinea pig: 100%; Bovine: 92%

**Product images:**



WB Suggested Anti-LDB2 Antibody Titration:  
2.5ug/ml; ELISA Titer: 1: 1562500; Positive  
Control: Human Lung