

Product datasheet for TA332135

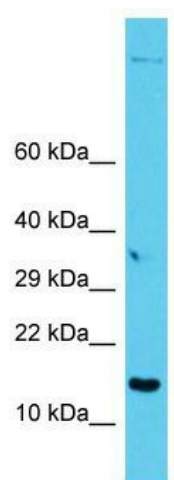
GAGE12I Rabbit Polyclonal Antibody

Product data:

Product Type:	Primary Antibodies
Applications:	WB
Recommended Dilution:	WB
Reactivity:	Human
Host:	Rabbit
Isotype:	IgG
Clonality:	Polyclonal
Immunogen:	The immunogen for Anti-GAGE12I Antibody is: synthetic peptide directed towards the C-terminal region of Human GAGE12I. Synthetic peptide located within the following region: AGQGPKPEAHSQEQGHPQTGCECEDGPDGQEMDPPNPEEVKTPEEGEKQS
Formulation:	Liquid. Purified antibody supplied in 1x PBS buffer with 0.09% (w/v) sodium azide and 2% sucrose.
Conjugation:	Unconjugated
Storage:	Store at -20°C as received.
Stability:	Stable for 12 months from date of receipt.
Predicted Protein Size:	13 kDa
Gene Name:	G antigen 12I
Database Link:	NP_001468 Entrez Gene 26748 Human O76087
Background:	This gene belongs to a family of genes that are expressed in a variety of tumors but not in normal tissues, except for the testis. The sequences of the family members are highly related but differ by scattered nucleotide substitutions. The antigenic peptide YYWPRPRRY, which is also encoded by several other family members, is recognized by autologous cytolytic T lymphocytes.
Synonyms:	AL4; CT4.7; GAGE-7B; GAGE7B
Note:	Immunogen sequence homology: Human: 100%


[View online »](#)

Product images:



Host: Rabbit; Target Name: GAGE12I; Sample
Tissue: PANC1 Whole Cell lysates; Antibody
Dilution: 1.0ug/ml