

Product datasheet for **TA332134**

ABCA2 Rabbit Polyclonal Antibody

Product data:

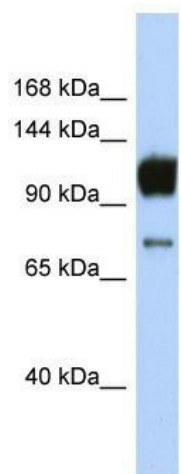
Product Type:	Primary Antibodies
Applications:	WB
Recommended Dilution:	WB
Reactivity:	Human
Host:	Rabbit
Isotype:	IgG
Clonality:	Polyclonal
Immunogen:	The immunogen for Anti-ABCA2 Antibody is: synthetic peptide directed towards the N-terminal region of Human ABCA2. Synthetic peptide located within the following region: ILPVMQSLCPDGQRDEFGFLQYANSTVTQLLERLDRVVEEGNLFDPARPS
Formulation:	Liquid. Purified antibody supplied in 1x PBS buffer with 0.09% (w/v) sodium azide and 2% sucrose. <i>Note that this product is shipped as lyophilized powder to China customers.</i>
Purification:	Affinity Purified
Conjugation:	Unconjugated
Storage:	Store at -20°C as received.
Stability:	Stable for 12 months from date of receipt.
Predicted Protein Size:	108 kDa
Gene Name:	ATP binding cassette subfamily A member 2
Database Link:	NP_001597 Entrez Gene 20 Human Q9BZC7
Background:	The function of this protein remains unknown.
Synonyms:	ABC2
Note:	Immunogen sequence homology: Dog: 100%; Rat: 100%; Horse: 100%; Human: 100%; Mouse: 100%; Bovine: 100%; Pig: 93%; Zebrafish: 93%; Guinea pig: 93%
Protein Families:	Druggable Genome, Transmembrane



[View online »](#)

Protein Pathways: ABC transporters, Lysosome

Product images:



Host: Rabbit; Target Name: ABCA2; Sample
Tissue: Jurkat Whole Cell lysates; Antibody
Dilution: 1.0ug/ml