

## Product datasheet for TA332131

### GOT2 Rabbit Polyclonal Antibody

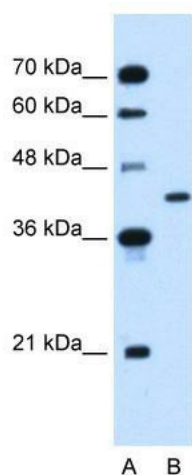
#### Product data:

Product Type:	Primary Antibodies
Applications:	WB
Recommended Dilution:	WB
Reactivity:	Human
Host:	Rabbit
Isotype:	IgG
Clonality:	Polyclonal
Immunogen:	The immunogen for Anti-GOT2 Antibody: synthetic peptide directed towards the N terminal of human GOT2. Synthetic peptide located within the following region: PPDPILGVTEAFKRDTNSKKMNLGVGAYRDDNGKPYVLPVSRKAEAQIAA
Formulation:	Liquid. Purified antibody supplied in 1x PBS buffer with 0.09% (w/v) sodium azide and 2% sucrose. <i>Note that this product is shipped as lyophilized powder to China customers.</i>
Conjugation:	Unconjugated
Storage:	Store at -20°C as received.
Stability:	Stable for 12 months from date of receipt.
Predicted Protein Size:	45 kDa
Gene Name:	glutamic-oxaloacetic transaminase 2
Database Link:	<a href="#">NP_002071</a> <a href="#">Entrez Gene 2806 Human</a> <a href="#">P00505</a>
Background:	Glutamic-oxaloacetic transaminase is a pyridoxal phosphate-dependent enzyme which exists in cytoplasmic and inner-membrane mitochondrial forms, GOT1 and GOT2, respectively. GOT plays a role in amino acid metabolism and the urea and tricarboxylic acid cycles. The two enzymes are homodimeric and show close homology. Glutamic-oxaloacetic transaminase is a pyridoxal phosphate-dependent enzyme which exists in cytoplasmic and inner-membrane mitochondrial forms, GOT1 and GOT2, respectively. GOT plays a role in amino acid metabolism and the urea and tricarboxylic acid cycles. The two enzymes are homodimeric and show close homology.



[View online »](#)

<b>Synonyms:</b>	KAT4; KATIV; mitAAT
<b>Note:</b>	Immunogen sequence homology: Pig: 100%; Rat: 100%; Horse: 100%; Human: 100%; Mouse: 100%; Yeast: 100%; Bovine: 100%; Rabbit: 100%; Zebrafish: 100%; Guinea pig: 100%; Dog: 93%
<b>Protein Families:</b>	Stem cell - Pluripotency
<b>Protein Pathways:</b>	Alanine, aspartate and glutamate metabolism, Arginine and proline metabolism, Cysteine and methionine metabolism, Metabolic pathways, Phenylalanine, tyrosine and tryptophan biosynthesis, Phenylalanine metabolism, Tyrosine metabolism

**Product images:**

WB Suggested Anti-GOT2 Antibody Titration:  
1.0ug/ml; ELISA Titer: 1: 312500; Positive Control:  
293T cell lysate