

Product datasheet for **TA332129**

KRT31 Rabbit Polyclonal Antibody

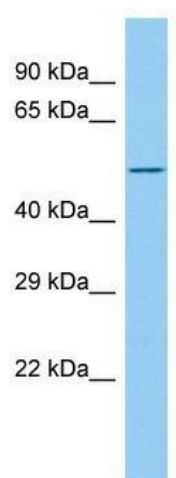
Product data:

Product Type:	Primary Antibodies
Applications:	WB
Recommended Dilution:	WB
Reactivity:	Human
Host:	Rabbit
Isotype:	IgG
Clonality:	Polyclonal
Immunogen:	The immunogen for Anti-KRT31 Antibody is: synthetic peptide directed towards the C-terminal region of Human KRT31. Synthetic peptide located within the following region: TLTESEARYSSQLSQVQSLITNVESQLAEIRSDLERQNQEYQVLLDVRAR
Formulation:	Liquid. Purified antibody supplied in 1x PBS buffer with 0.09% (w/v) sodium azide and 2% sucrose. <i>Note that this product is shipped as lyophilized powder to China customers.</i>
Conjugation:	Unconjugated
Storage:	Store at -20°C as received.
Stability:	Stable for 12 months from date of receipt.
Predicted Protein Size:	47 kDa
Gene Name:	keratin 31
Database Link:	NP_002268 Entrez Gene 3881 Human Q15323
Background:	The protein encoded by this gene is a member of the keratin gene family. As a type I hair keratin, it is an acidic protein which heterodimerizes with type II keratins to form hair and nails. The type I hair keratins are clustered in a region of chromosome 17q12-q21 and have the same direction of transcription.
Synonyms:	Ha-1; HA1; hHa1; KRTHA1
Note:	Immunogen sequence homology: Dog: 100%; Goat: 100%; Horse: 100%; Human: 100%; Sheep: 100%; Bovine: 100%; Pig: 93%; Rat: 93%; Mouse: 93%; Rabbit: 93%



[View online »](#)

Product images:



Host: Rabbit; Target Name: KRT31; Sample Tissue: 721_B Whole Cell lysates; Antibody Dilution: 1.0ug/ml