

Product datasheet for **TA332127**

CCN3 (NOV) Rabbit Polyclonal Antibody

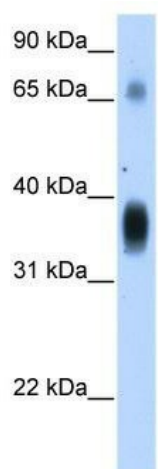
Product data:

Product Type:	Primary Antibodies
Applications:	WB
Recommended Dilution:	WB
Reactivity:	Human
Host:	Rabbit
Isotype:	IgG
Clonality:	Polyclonal
Immunogen:	The immunogen for Anti-NOV Antibody: synthetic peptide directed towards the middle region of human NOV. Synthetic peptide located within the following region: RNRQCEMLKQTRLKCMVRPCEQEPEQPTDKKGGKCLRTKKSLKAIHLQFKN
Formulation:	Liquid. Purified antibody supplied in 1x PBS buffer with 0.09% (w/v) sodium azide and 2% sucrose. <i>Note that this product is shipped as lyophilized powder to China customers.</i>
Conjugation:	Unconjugated
Storage:	Store at -20°C as received.
Stability:	Stable for 12 months from date of receipt.
Predicted Protein Size:	39 kDa
Gene Name:	nephroblastoma overexpressed
Database Link:	NP_002505 Entrez Gene 4856 Human P48745
Background:	As an immediate-early protein, NOV is likely to play a role in cell growth regulation.
Synonyms:	CCN3; IBP-9; IGFBP-9; IGFBP9; NOVh
Note:	Immunogen sequence homology: Human: 100%; Rabbit: 100%; Horse: 86%; Mouse: 86%; Yeast: 83%; Dog: 79%; Pig: 79%; Rat: 79%; Bovine: 79%; Guinea pig: 79%
Protein Families:	ES Cell Differentiation/IPS, Secreted Protein



[View online »](#)

Product images:



WB Suggested Anti-NOV Antibody Titration:
1.25ug/ml; Positive Control: Transfected 293T