

Product datasheet for **TA332124**

P2Y4 (P2RY4) Rabbit Polyclonal Antibody

Product data:

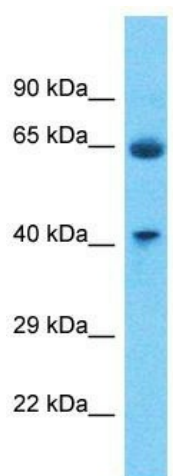
Product Type:	Primary Antibodies
Applications:	WB
Recommended Dilution:	WB
Reactivity:	Human
Host:	Rabbit
Isotype:	IgG
Clonality:	Polyclonal
Immunogen:	The immunogen for Anti-P2RY4 Antibody is: synthetic peptide directed towards the C-terminal region of Human P2RY4. Synthetic peptide located within the following region: VTRPLASANSCLDPVLYLLTGDKYRRQLRQLCGGGKQPRTAASSLALVS
Formulation:	Liquid. Purified antibody supplied in 1x PBS buffer with 0.09% (w/v) sodium azide and 2% sucrose. <i>Note that this product is shipped as lyophilized powder to China customers.</i>
Conjugation:	Unconjugated
Storage:	Store at -20°C as received.
Stability:	Stable for 12 months from date of receipt.
Predicted Protein Size:	40 kDa
Gene Name:	pyrimidinergic receptor P2Y4
Database Link:	NP_002556 Entrez Gene 5030 Human P51582
Background:	The product of this gene belongs to the family of G-protein coupled receptors. This family has several receptor subtypes with different pharmacological selectivity, which overlaps in some cases, for various adenosine and uridine nucleotides. This receptor is responsive to uridine nucleotides, partially responsive to ATP, and not responsive to ADP.
Synonyms:	NRU; P2P; P2Y4; UNR
Note:	Immunogen sequence homology: Human: 100%; Rat: 85%
Protein Families:	Druggable Genome



[View online »](#)

Protein Pathways: Neuroactive ligand-receptor interaction

Product images:



Host: Rabbit

Target Name: P2RY4

Sample Tissue: Fetal Lung Lysate

Antibody Dilution: 1.0 μ g/ml

Host: Rabbit; Target Name: P2RY4; Sample Tissue: Fetal Lung lysates; Antibody Dilution: 1.0 μ g/ml