

## Product datasheet for **TA332123**

### **PFDN1 Rabbit Polyclonal Antibody**

#### **Product data:**

Product Type:	Primary Antibodies
Applications:	WB
Recommended Dilution:	WB
Reactivity:	Human
Host:	Rabbit
Isotype:	IgG
Clonality:	Polyclonal
Immunogen:	The immunogen for Anti-PFDN1 Antibody: synthetic peptide directed towards the N terminal of human PFDN1. Synthetic peptide located within the following region: MAAPVDLELKKAFTELQAKVIDTQQKVKLADIQIEQLNRTKKHAHLTDTE
Formulation:	Liquid. Purified antibody supplied in 1x PBS buffer with 0.09% (w/v) sodium azide and 2% sucrose. <i>Note that this product is shipped as lyophilized powder to China customers.</i>
Conjugation:	Unconjugated
Storage:	Store at -20°C as received.
Stability:	Stable for 12 months from date of receipt.
Predicted Protein Size:	14 kDa
Gene Name:	prefoldin subunit 1
Database Link:	<a href="#">NP_002613</a> <a href="#">Entrez Gene 5201 Human O60925</a>
Background:	Prefoldin 1 is a heterohexameric chaperone protein which assists in the correct folding of other proteins. It binds specifically to cytosolic chaperonin and transfers target proteins. Prefoldin may function by selectively targeting nascent actin and tubulin chains pending their transfer to cytosolic chaperonin for final folding and/or assembly. It promotes folding in an environment in which there are many competing pathways for nonnative proteins.
Synonyms:	PDF; PFD1

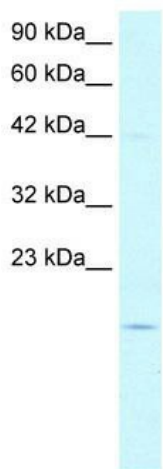


[View online »](#)

**Note:** Immunogen sequence homology: Dog: 100%; Pig: 100%; Rat: 100%; Horse: 100%; Human: 100%; Mouse: 100%; Rabbit: 100%; Guinea pig: 100%; Bovine: 92%

**Protein Families:** Transcription Factors

**Product images:**



WB Suggested Anti-PFDN1 Antibody Titration:  
5.0-8.0ug/ml; Positive Control: HepG2 cell  
lysate PFDN1 is supported by BioGPS gene  
expression data to be expressed in HepG2