

Product datasheet for TA332122

Phospholipase D2 (PLD2) Rabbit Polyclonal Antibody

Product data:

Product Type:	Primary Antibodies
Applications:	WB
Recommended Dilution:	WB
Reactivity:	Human, Mouse
Host:	Rabbit
Isotype:	IgG
Clonality:	Polyclonal
Immunogen:	The immunogen for Anti-PLD2 Antibody: synthetic peptide directed towards the middle region of human PLD2. Synthetic peptide located within the following region: DLHYRLTDLGDSSESAASQPPTPRPDSPATPDLSHNQFFWLKGDYSNLIT
Formulation:	Liquid. Purified antibody supplied in 1x PBS buffer with 0.09% (w/v) sodium azide and 2% sucrose. <i>Note that this product is shipped as lyophilized powder to China customers.</i>
Conjugation:	Unconjugated
Storage:	Store at -20°C as received.
Stability:	Stable for 12 months from date of receipt.
Predicted Protein Size:	106 kDa
Gene Name:	phospholipase D2
Database Link:	NP_002654 Entrez Gene 18806 Mouse Entrez Gene 5338 Human O14939
Background:	The protein encoded by this gene catalyzes the hydrolysis of phosphatidylcholine to phosphatidic acid and choline. The activity of the encoded enzyme is enhanced by phosphatidylinositol 4,5-bisphosphate and ADP-ribosylation factor-1. This protein localizes to the peripheral membrane and may be involved in cytoskeletal organization, cell cycle control, transcriptional regulation, and/or regulated secretion. Two transcript variants encoding different isoforms have been found for this gene. [provided by RefSeq, Jul 2011]
Synonyms:	choline phosphatase 2; phospholipase D2



[View online »](#)

Note: Immunogen sequence homology: Human: 100%; Bovine: 100%; Pig: 92%; Rat: 92%; Horse: 92%

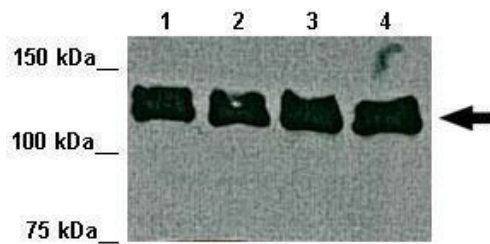
Protein Families: Druggable Genome

Protein Pathways: Endocytosis, Ether lipid metabolism, Fc gamma R-mediated phagocytosis, Glycerophospholipid metabolism, GnRH signaling pathway, Metabolic pathways

Product images:



WB Suggested Anti-PLD2 Antibody Titration: 0.2-1 ug/ml; ELISA Titer: 1: 62500; Positive Control: Transfected 293T



Lanes: Lane 1: 22ug mouse liver cell lysate; Lane 2: 22ug mouse liver cell lysate; Lane 3: 22ug mouse liver cell lysate; Lane 4: 22ug mouse liver cell lysate; Primary Antibody Dilution: 1: 1000; Secondary Antibody: Anti-rabbit-HRP; Secondary Antibody Dilu

See Immunoblot 2 Data and Customer Feedback for more Information