

## Product datasheet for **TA332121**

### PLGLB1 (PLGLB2) Rabbit Polyclonal Antibody

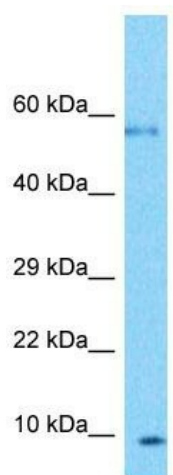
#### Product data:

Product Type:	Primary Antibodies
Applications:	WB
Recommended Dilution:	WB
Reactivity:	Human
Host:	Rabbit
Isotype:	IgG
Clonality:	Polyclonal
Immunogen:	The immunogen for Anti-PLGLB2 Antibody is: synthetic peptide directed towards the middle region of Human PLGLB2. Synthetic peptide located within the following region: PSLFSVTKKQLGAGSREECAAKCEEDKEFTCRAFQYHSKEQQCVIMAENR
Formulation:	Liquid. Purified antibody supplied in 1x PBS buffer with 0.09% (w/v) sodium azide and 2% sucrose. <i>Note that this product is shipped as lyophilized powder to China customers.</i>
Conjugation:	Unconjugated
Storage:	Store at -20°C as received.
Stability:	Stable for 12 months from date of receipt.
Predicted Protein Size:	10 kDa
Gene Name:	plasminogen-like B2
Database Link:	<a href="#">NP_002656</a> <a href="#">Entrez Gene 5342 Human</a> <a href="#">Q02325</a>
Background:	The function of this protein remains unknown.
Synonyms:	PLGP1
Note:	Immunogen sequence homology: Human: 100%; Dog: 79%; Rabbit: 79%
Protein Families:	Secreted Protein



[View online »](#)

## Product images:



Host: Rabbit  
Target Name: PLGLB2  
Sample Tissue: U937 Cell Lysate  
Antibody Dilution: 1.0 $\mu$ g/ml

Host: Rabbit; Target Name: PLGLB2; Sample  
Tissue: U937 Whole Cell lysates; Antibody  
Dilution: 1.0 $\mu$ g/ml