

Product datasheet for TA332120

PLRG1 Rabbit Polyclonal Antibody

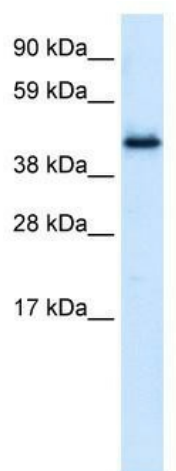
Product data:

Product Type:	Primary Antibodies
Applications:	WB
Recommended Dilution:	WB
Reactivity:	Human
Host:	Rabbit
Isotype:	IgG
Clonality:	Polyclonal
Immunogen:	The immunogen for Anti-PLRG1 Antibody: synthetic peptide directed towards the N terminal of human PLRG1. Synthetic peptide located within the following region: YGPVLHMPTSKENLKEKGPQNATDSYVHKQYPANQGQEVEYFVAGTHPYP
Formulation:	Liquid. Purified antibody supplied in 1x PBS buffer with 0.09% (w/v) sodium azide and 2% sucrose. <i>Note that this product is shipped as lyophilized powder to China customers.</i>
Conjugation:	Unconjugated
Storage:	Store at -20°C as received.
Stability:	Stable for 12 months from date of receipt.
Predicted Protein Size:	57 kDa
Gene Name:	pleiotropic regulator 1
Database Link:	NP_002660 Entrez Gene 5356 Human O43660
Background:	PLRG1 is necessary for spliceosome assembly and for pre-mRNA splicing.
Synonyms:	Cwc1; PRL1; PRP46; PRPF46; TANGO4
Note:	Immunogen sequence homology: Pig: 100%; Human: 100%; Mouse: 100%; Rabbit: 100%; Guinea pig: 100%; Rat: 92%; Horse: 92%; Bovine: 85%; Dog: 83%
Protein Families:	Transcription Factors
Protein Pathways:	Spliceosome



[View online »](#)

Product images:



WB Suggested Anti-PLRG1 Antibody Titration: 0.2-1 ug/ml; Positive Control: Human Small Intestine