

Product datasheet for **TA332119**

Oct6 (POU3F1) Rabbit Polyclonal Antibody

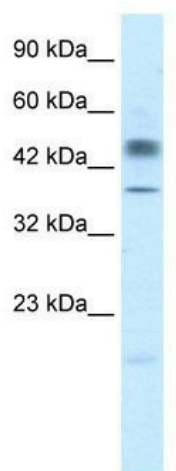
Product data:

Product Type:	Primary Antibodies
Applications:	IHC, WB
Recommended Dilution:	WB, IHC
Reactivity:	Human
Host:	Rabbit
Isotype:	IgG
Clonality:	Polyclonal
Immunogen:	The immunogen for Anti-POU3F1 Antibody: synthetic peptide directed towards the N terminal of human POU3F1. Synthetic peptide located within the following region: YLPRGPGGGAGGTGPLMHPDAAAAAAAAAERLHAGAAAYREVQKLMHHEWL
Formulation:	Liquid. Purified antibody supplied in 1x PBS buffer with 0.09% (w/v) sodium azide and 2% sucrose. <i>Note that this product is shipped as lyophilized powder to China customers.</i>
Conjugation:	Unconjugated
Storage:	Store at -20°C as received.
Stability:	Stable for 12 months from date of receipt.
Predicted Protein Size:	45 kDa
Gene Name:	POU class 3 homeobox 1
Database Link:	NP_002690 Entrez Gene 5453 Human Q03052
Background:	POU3F1 is a member of the POU domain family of proteins, and regulates events during neurogenesis and myelination.
Synonyms:	OCT6; OTF6; SCIP
Note:	Immunogen sequence homology: Dog: 100%; Pig: 100%; Rat: 100%; Human: 100%; Mouse: 100%; Bovine: 100%; Rabbit: 100%; Guinea pig: 100%
Protein Families:	Transcription Factors

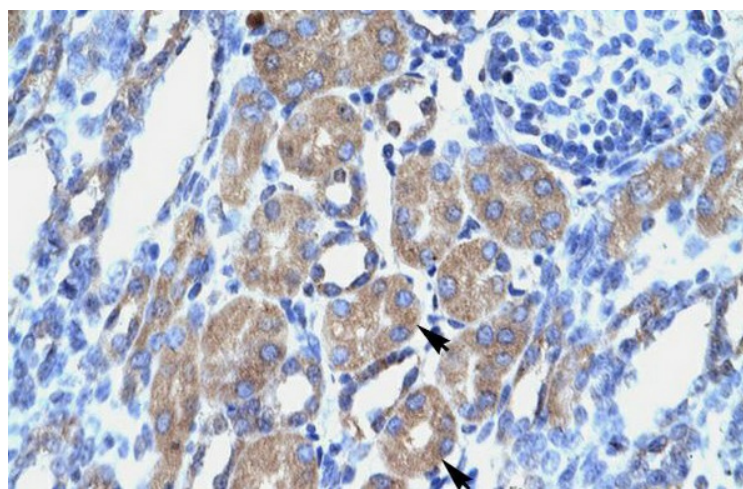


[View online »](#)

Product images:



WB Suggested Anti-POU3F1 Antibody Titration: 2.5ug/ml; Positive Control: Jurkat cell lysate



Human kidney