

Product datasheet for **TA332118**

POU4F3 Rabbit Polyclonal Antibody

Product data:

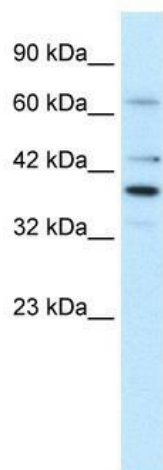
Product Type:	Primary Antibodies
Applications:	IHC, WB
Recommended Dilution:	WB, IHC
Reactivity:	Mouse, Human
Host:	Rabbit
Isotype:	IgG
Clonality:	Polyclonal
Immunogen:	The immunogen for Anti-POU4F3 Antibody: synthetic peptide directed towards the middle region of human POU4F3. Synthetic peptide located within the following region: ALANLKIPGVGSLSQSTICRFESLTLSHNNMIALKPVLQAWLEEEAAAYR
Formulation:	Liquid. Purified antibody supplied in 1x PBS buffer with 0.09% (w/v) sodium azide and 2% sucrose. <i>Note that this product is shipped as lyophilized powder to China customers.</i>
Conjugation:	Unconjugated
Storage:	Store at -20°C as received.
Stability:	Stable for 12 months from date of receipt.
Predicted Protein Size:	37 kDa
Gene Name:	POU class 4 homeobox 3
Database Link:	NP_002691 Entrez Gene 18998 Mouse Entrez Gene 5459 Human Q15319
Background:	POU4F3 is capable of activating both BDNF and NT-3 promoters in inner ear sensory epithelial cell lines. Mutant POU4F3 loses most of its transcriptional activity and most of its ability to bind to DNA. The mutation causes autosomal-dominant nonsyndromic hearing loss and eventually leads to hair cell morbidity in affected family members.
Synonyms:	BRN3C; DFNA15
Note:	Immunogen sequence homology: Dog: 100%; Pig: 100%; Rat: 100%; Horse: 100%; Human: 100%; Mouse: 100%; Bovine: 100%; Rabbit: 100%; Zebrafish: 100%; Guinea pig: 100%



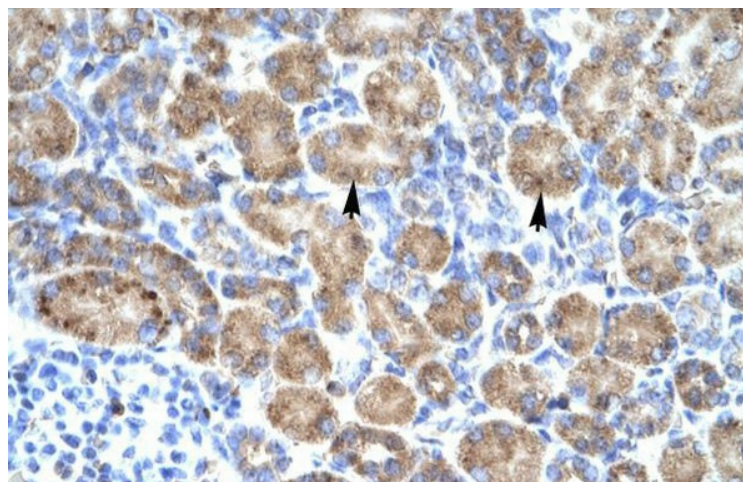
[View online »](#)

Protein Families: Transcription Factors

Product images:



WB Suggested Anti-POU4F3 Antibody Titration:
1.25ug/ml; Positive Control: HepG2 cell lysate



Human kidney