

Product datasheet for **TA332114**

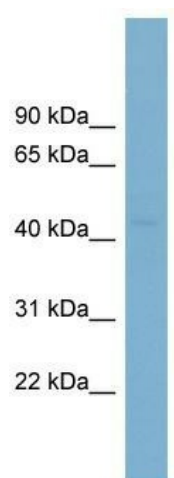
PCYT2 Rabbit Polyclonal Antibody

Product data:

Product Type:	Primary Antibodies
Applications:	WB
Recommended Dilution:	WB
Reactivity:	Human
Host:	Rabbit
Isotype:	IgG
Clonality:	Polyclonal
Immunogen:	The immunogen for Anti-PCYT2 Antibody: synthetic peptide directed towards the middle region of human PCYT2. Synthetic peptide located within the following region: KCPGGRNPWTGVSQFLQTSQKIIQFASGKEPQPGETVIYVAGAFDLFHIG
Formulation:	Liquid. Purified antibody supplied in 1x PBS buffer with 0.09% (w/v) sodium azide and 2% sucrose. <i>Note that this product is shipped as lyophilized powder to China customers.</i>
Conjugation:	Unconjugated
Storage:	Store at -20°C as received.
Stability:	Stable for 12 months from date of receipt.
Predicted Protein Size:	44 kDa
Gene Name:	phosphate cytidyltransferase 2, ethanolamine
Database Link:	NP_002852 Entrez Gene 5833 Human Q99447
Background:	The function remains unknown.
Synonyms:	ET
Note:	Immunogen sequence homology: Dog: 100%; Pig: 100%; Rat: 100%; Horse: 100%; Human: 100%; Mouse: 100%; Bovine: 100%; Guinea pig: 100%; Zebrafish: 86%
Protein Pathways:	Glycerophospholipid metabolism, Metabolic pathways



[View online »](#)

Product images:

WB Suggested Anti-PCYT2 Antibody Titration: 0.2-1 ug/ml; ELISA Titer: 1: 312500; Positive Control: OVCAR-3 cell lysate