

## Product datasheet for **TA332113**

### PCYT2 Rabbit Polyclonal Antibody

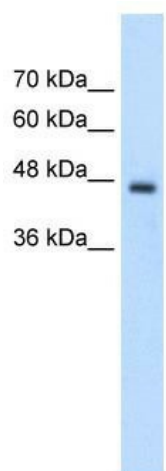
#### Product data:

Product Type:	Primary Antibodies
Applications:	WB
Recommended Dilution:	WB
Reactivity:	Human
Host:	Rabbit
Isotype:	IgG
Clonality:	Polyclonal
Immunogen:	The immunogen for Anti-PCYT2 Antibody: synthetic peptide directed towards the C terminal of human PCYT2. Synthetic peptide located within the following region: KVDLVCHGKTEIIPDRDGSDPYQEPKRRGIFRQIDSGSNLTTDLIVQRII
Formulation:	Liquid. Purified antibody supplied in 1x PBS buffer with 0.09% (w/v) sodium azide and 2% sucrose. <i>Note that this product is shipped as lyophilized powder to China customers.</i>
Conjugation:	Unconjugated
Storage:	Store at -20°C as received.
Stability:	Stable for 12 months from date of receipt.
Predicted Protein Size:	43 kDa
Gene Name:	phosphate cytidyltransferase 2, ethanolamine
Database Link:	<a href="#">NP_002852</a> <a href="#">Entrez Gene 5833 Human</a> <a href="#">Q99447</a>
Background:	The function remains unknown.
Synonyms:	ET
Note:	Immunogen sequence homology: Pig: 100%; Human: 100%; Mouse: 100%; Guinea pig: 100%; Dog: 93%; Rat: 93%; Horse: 92%; Bovine: 86%; Zebrafish: 77%
Protein Pathways:	Glycerophospholipid metabolism, Metabolic pathways



[View online »](#)

## Product images:



WB Suggested Anti-PCYT2 Antibody Titration:  
2.5ug/ml; Positive Control: Jurkat cell lysate