

## Product datasheet for **TA332111**

### RFX4 Rabbit Polyclonal Antibody

#### Product data:

Product Type:	Primary Antibodies
Applications:	WB
Recommended Dilution:	WB
Reactivity:	Human
Host:	Rabbit
Isotype:	IgG
Clonality:	Polyclonal
Immunogen:	The immunogen for Anti-RFX4 Antibody: synthetic peptide directed towards the middle region of human RFX4. Synthetic peptide located within the following region: NVDLNSITKQTLTYMEDSRDEHRKLITQLYQEFDHLLLEEQSPIESYIEWL
Formulation:	Liquid. Purified antibody supplied in 1x PBS buffer with 0.09% (w/v) sodium azide and 2% sucrose. <i>Note that this product is shipped as lyophilized powder to China customers.</i>
Conjugation:	Unconjugated
Storage:	Store at -20°C as received.
Stability:	Stable for 12 months from date of receipt.
Predicted Protein Size:	64 kDa
Gene Name:	regulatory factor X4
Database Link:	<a href="#">NP_002911</a> <a href="#">Entrez Gene 5992 Human Q33E94</a>



[View online »](#)

**Background:**

RFX4 is a transcription factors that contain a highly-conserved winged helix DNA binding domain. RFX4 is structurally related to regulatory factors X1, X2, X3, and X5. It has been shown to interact with itself as well as with regulatory factors X2 and X3, but it does not interact with regulatory factor X1. RFX4 may be a transcriptional repressor rather than a transcriptional activator. This gene is a member of the regulatory factor X gene family, which encodes transcription factors that contain a highly-conserved winged helix DNA binding domain. The protein encoded by this gene is structurally related to regulatory factors X1, X2, X3, and X5. It has been shown to interact with itself as well as with regulatory factors X2 and X3, but it does not interact with regulatory factor X1. This protein may be a transcriptional repressor rather than a transcriptional activator. Three transcript variants encoding different isoforms have been described for this gene.

**Synonyms:**

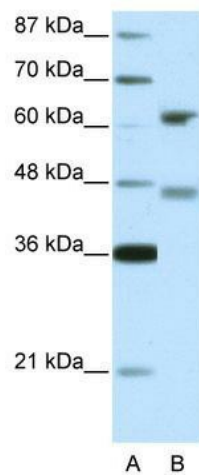
NYD-SP10

**Note:**

Immunogen sequence homology: Human: 100%; Dog: 93%; Horse: 93%; Rabbit: 93%; Pig: 86%; Rat: 86%; Mouse: 86%; Bovine: 86%; Guinea pig: 86%

**Protein Families:**

Transcription Factors

**Product images:**

WB Suggested Anti-RFX4 Antibody Titration:  
5.0ug/ml; ELISA Titer: 1: 1562500; Positive  
Control: 293T cell lysate