

## Product datasheet for **TA332105**

### TEC Rabbit Polyclonal Antibody

#### Product data:

Product Type:	Primary Antibodies
Applications:	WB
Recommended Dilution:	WB
Reactivity:	Human
Host:	Rabbit
Isotype:	IgG
Clonality:	Polyclonal
Immunogen:	The immunogen for Anti-TEFM Antibody is: synthetic peptide directed towards the N-terminal region of Human TEFM. Synthetic peptide located within the following region: RSSLYWALHNFFCCRKKSTTPKKITPNVTFCDENAKEPENALDKLFSSEQQ
Formulation:	Liquid. Purified antibody supplied in 1x PBS buffer with 0.09% (w/v) sodium azide and 2% sucrose. <i>Note that this product is shipped as lyophilized powder to China customers.</i>
Purification:	Affinity Purified
Conjugation:	Unconjugated
Storage:	Store at -20°C as received.
Stability:	Stable for 12 months from date of receipt.
Predicted Protein Size:	18 kDa
Gene Name:	tec protein tyrosine kinase
Database Link:	<a href="#">NP_003206</a> <a href="#">Entrez Gene 7006 Human P42680</a>
Background:	TEFM is a transcription elongation factor which increases mitochondrial RNA polymerase processivity. It regulates transcription of the mitochondrial genome, including genes important for the oxidative phosphorylation machinery.
Synonyms:	PSCTK4
Note:	Immunogen sequence homology: Human: 100%; Pig: 79%; Dog: 77%

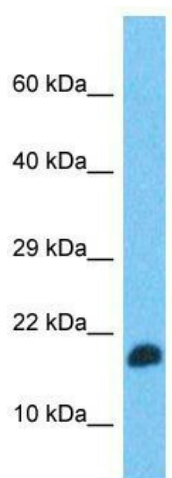


[View online »](#)

Protein Families: Druggable Genome, Protein Kinase

Protein Pathways: T cell receptor signaling pathway

### Product images:



Host: Rabbit; Target Name: TEFM; Sample Tissue: Fetal Brain lysates; Antibody Dilution: 1.0ug/ml