

Product datasheet for **TA332104**

UBE2N Rabbit Polyclonal Antibody

Product data:

Product Type:	Primary Antibodies
Applications:	IHC, WB
Recommended Dilution:	WB, IHC
Reactivity:	Mouse, Human
Host:	Rabbit
Isotype:	IgG
Clonality:	Polyclonal
Immunogen:	The immunogen for Anti-UBE2N Antibody: synthetic peptide directed towards the middle region of human UBE2N. Synthetic peptide located within the following region: GRICLDILKDKWSPALQIRTVLLSIQALLSAPNPDDPLANDVAEQWKTNE
Formulation:	Liquid. Purified antibody supplied in 1x PBS buffer with 0.09% (w/v) sodium azide and 2% sucrose. <i>Note that this product is shipped as lyophilized powder to China customers.</i>
Conjugation:	Unconjugated
Storage:	Store at -20°C as received.
Stability:	Stable for 12 months from date of receipt.
Predicted Protein Size:	17 kDa
Gene Name:	ubiquitin conjugating enzyme E2 N
Database Link:	NP_003339 Entrez Gene 93765 Mouse Entrez Gene 7334 Human P61088



[View online »](#)

Background:

UBE2N encodes a member of the E2 ubiquitin-conjugating enzyme family. The modification of proteins with ubiquitin is an important cellular mechanism for targeting abnormal or short-lived proteins for degradation. Ubiquitination involves at least three classes of enzymes: ubiquitin-activating enzymes, or E1s, ubiquitin-conjugating enzymes, or E2s, and ubiquitin-protein ligases, or E3s. Studies in mouse suggest that this protein plays a role in DNA postreplication repair. The modification of proteins with ubiquitin is an important cellular mechanism for targeting abnormal or short-lived proteins for degradation. Ubiquitination involves at least three classes of enzymes: ubiquitin-activating enzymes, or E1s, ubiquitin-conjugating enzymes, or E2s, and ubiquitin-protein ligases, or E3s. This gene encodes a member of the E2 ubiquitin-conjugating enzyme family. Studies in mouse suggest that this protein plays a role in DNA postreplication repair.

Synonyms:

HEL-S-71; UBC13; UbcH-ben; UbcH13; UBCHBEN

Note:

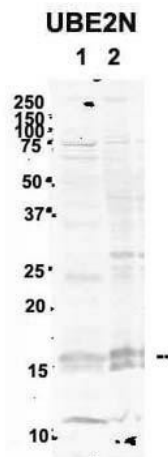
Immunogen sequence homology: Dog: 100%; Pig: 100%; Rat: 100%; Horse: 100%; Human: 100%; Mouse: 100%; Sheep: 100%; Yeast: 100%; Bovine: 100%; Rabbit: 100%; Zebrafish: 100%; Guinea pig: 100%; Goat: 93%

Protein Families:

Druggable Genome

Protein Pathways:

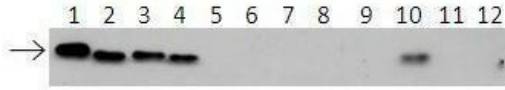
Ubiquitin mediated proteolysis

Product images:

See Immunoblot 2 Data for more information.

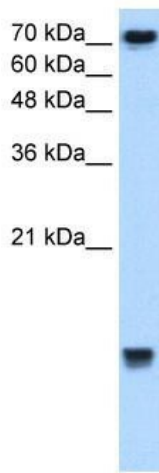
Sample Type: 1. Human NT-2 cells (60ug); 2. mouse brain extracts (80ug); Primary Antibody Dilution: 2ug/ml; Secondary Antibody: IRDye 800CW goat anti-rabbit from Li-COR Bioscience; Secondary Antibody Dilution: 1: 20, 000; Image Submitted by: Yuzhi Chen; U

UBE2N



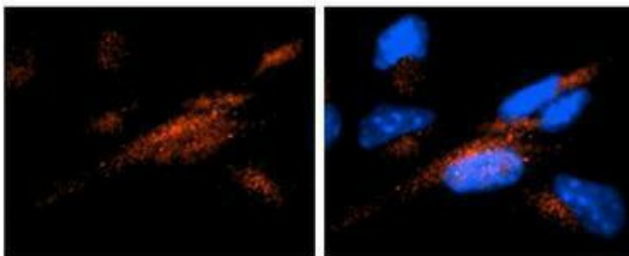
Lanes: 1: 40ng HIS-UBE2D1 protein; 2: 40ng HIS-UBE2D2 protein; 3: 40ng HIS-UBE2D3 protein; 4: 40ng HIS-UBE2D4 protein; 5: 40ng HIS-UBE2E1 protein; 6: 40ng HIS-UBE2E2 protein; 7: 40ng HIS-UBE2E3 protein; 8: 40ng HIS-UBE2K protein; 9: 40ng HIS-UBE2L3 protei

See Immunoblot 4 data and customer Feedback for more information



WB Suggested Anti-UBE2N Antibody Titration: 2.5ug/ml; Positive Control: Jurkat cell lysate UBE2N is strongly supported by BioGPS gene expression data to be expressed in Human Jurkat cells

UBE2N



Antibody--RED
DAPI--Blue

Sample Type. Mouse brain stem cells Primary Antibody Dilution: 1: 500; Secondary Antibody: Goat anti-rabbit Alexa-Fluor 594; Secondary Antibody: ilution. 1: 1000; Color/Signal Descriptions. UBE2N: Red DAPI: Blue; Gene Name: UBE2N; Submitted by: Dr. Yuz

See IHC 1 Data and Customer Feedback for more information